



EEL
User Manual



Version Control

| Date | Changed by | Changes Made |
|-----------|---------------|--|
| 5/1/16 | Nicola Latter | |
| 24/2/16 | Nicola Latter | |
| 12/10/16 | Nicola Latter | |
| 15/3/17 | Nicola Latter | |
| 14/6/17 | Nicola Latter | |
| 19/7/17 | Nicola Latter | |
| 12/10/17 | Nicola Latter | |
| 31/5/18 | Nicola Latter | |
| 2/1/19 | Nicola Latter | |
| 3/7/19 | Nicola Latter | |
| 16/10/19 | Nicola Latter | |
| 22/4/21 | Nicola Jordan | |
| 7/10/21 | Nicola Jordan | Changes as per release 51.5.0.0 |
| 28/6/2022 | Nicola Jordan | Release 52.7.0.0 - 'camera can't connect' button removed |
| 01/4/2023 | Nicola Jordan | EEL FAQ added |

Table of Contents

| | |
|---|-----------|
| Introduction | 1 |
| Software Requirements (PC) | 2 |
| Access the EEL App | 7 |
| Jobs | 8 |
| Search for a Job | 8 |
| Download a Job | 9 |
| Open a Job | 10 |
| Remove a Job | 12 |
| Testing | 13 |
| Visual Test | 13 |
| Timer Test | 16 |
| Switchboard Fail | 19 |
| Failed Assets | 20 |
| Add Failure Details | 20 |
| Fix a Failed Asset | 22 |
| Repairs | 22 |
| Add Replacement Part | 24 |
| View Test Status of Assets | 25 |
| Using Table View | 25 |
| Using the Circuit Plan | 27 |
| Using the Summary Screen | 28 |
| View Last Test Results | 30 |
| Reporting | 31 |
| Complete a Circuit | 33 |
| Re-open a Completed Circuit | 33 |
| Timesheets and Sign-Offs | 34 |
| Upload Test Results | 36 |
| Complete a Job | 37 |
| Add a Switchboard | 38 |
| Quick Start | 38 |
| Create a Switchboard | 39 |

| | |
|--|-----------|
| Create a Circuit | 40 |
| Create a Circuit Plan | 41 |
| Create a Plan..... | 41 |
| Add Asset Details..... | 43 |
| Copy Asset Details..... | 44 |
| Add a Circuit Map | 45 |
| Create a Circuit Map..... | 46 |
| Add a Photo to a Circuit Map | 48 |
| Create Multiple Plans for a Circuit..... | 49 |
| Save the Circuit Plan..... | 50 |
| Edit Switchboard Data | 51 |
| Edit Switchboard Data | 51 |
| Edit Circuit Data | 51 |
| Edit Asset Details..... | 51 |
| Edit All Assets | 53 |
| Edit Building, Room etc | 54 |
| Edit a Circuit Plan | 56 |
| Add Assets..... | 56 |
| Move Assets | 56 |
| Re-size an Asset Icon | 56 |
| Circuit Plan Zoom..... | 57 |
| Change the Walk Order..... | 57 |
| Print the Asset Plan..... | 57 |
| Create a PDF of the Plan | 58 |
| Settings..... | 59 |
| Close the App | 61 |
| F.A.Qs | 62 |
| Troubleshooting..... | 64 |

Introduction

EEL is the test system for emergency exit and emergency lighting installed at a site. It is part of the AIRS suite of apps which also includes Neo and Fire.

EEL is an app running on a Windows based tablet.

This document details how to use the EEL app,

FOR DOCUMENTATION REGARDING INSTALLING THE APP USE THE LINKS ON THE WEBSITE:

www.datatransformation.com.au/Software/neo/neo.html

Software Requirements (PC)

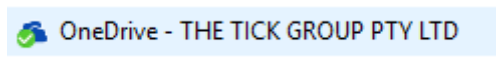
IMPORTANT

Ensure the following requirements are fulfilled on the PC to avoid data loss or corruption.

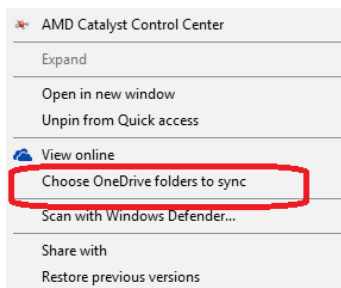
1. If OneDrive is not being used, stop synchronising with OneDrive.
2. If the PC is only being used for test and tagging, uninstall the antivirus software.
3. If the antivirus software is required, exclude the AIRS files from the antivirus check.
4. Ensure the EEL app is closed before shutting down the PC.

How to stop the PC synchronising with OneDrive

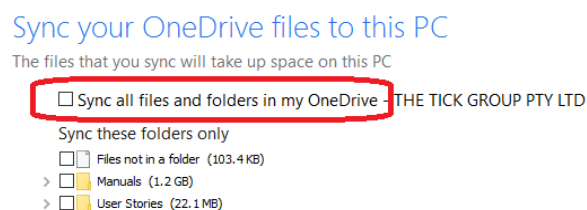
1. In File Explorer, right click on the OneDrive folder.



2. Select **Choose OneDrive files to sync** from the menu.



3. Uncheck **Sync all files and folders in my OneDrive**.

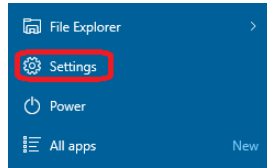


4. Click **OK**.

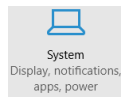
How to uninstall the antivirus software

1. Click the 'Start' icon .

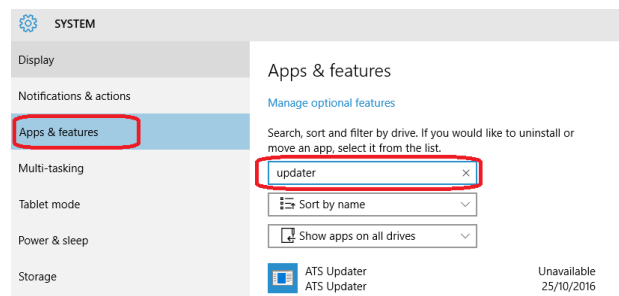
2. Click **Settings**.



3. Click **System**.

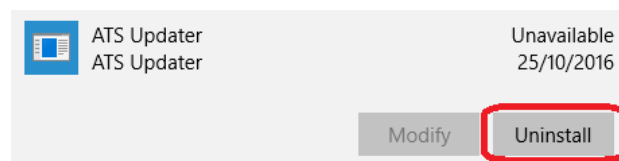


4. Select **Apps and Features** from the menu.



5. Enter a search term for the antivirus software, for example Windows Defender.

6. Click on the required program name in the list.

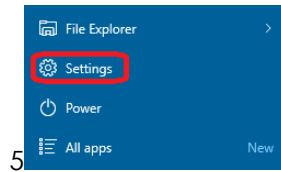


7. Click **Uninstall**.

How to exclude AIRS from the antivirus check

1. Click the 'Start' icon .

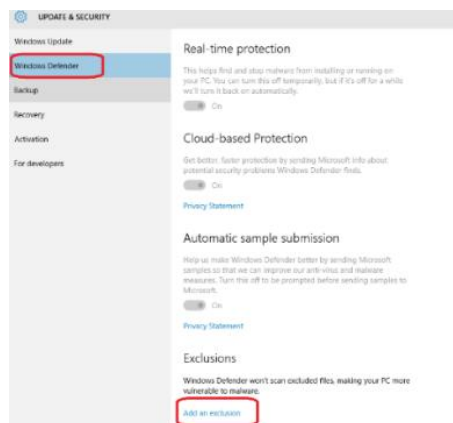
2. Click **Settings**.



3. Click **Update & Security**.

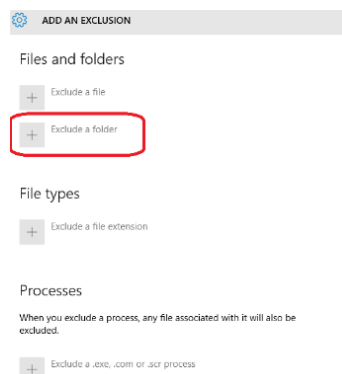


4. Select **Windows Defender** or **Windows Security** (depending on version of Windows).



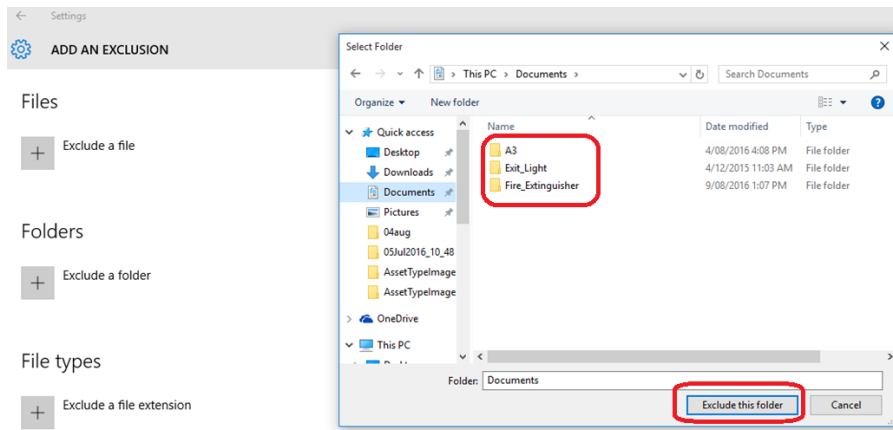
5. Select **Add an exclusion**.

6. Select **Exclude a folder**.



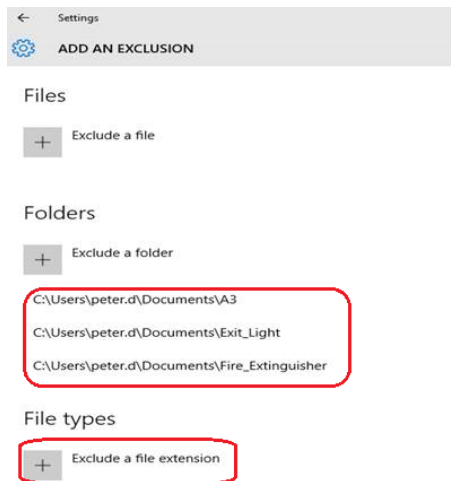
7. Select the 'A3' folder from Documents (My Documents),

8. Click **Exclude this folder.**

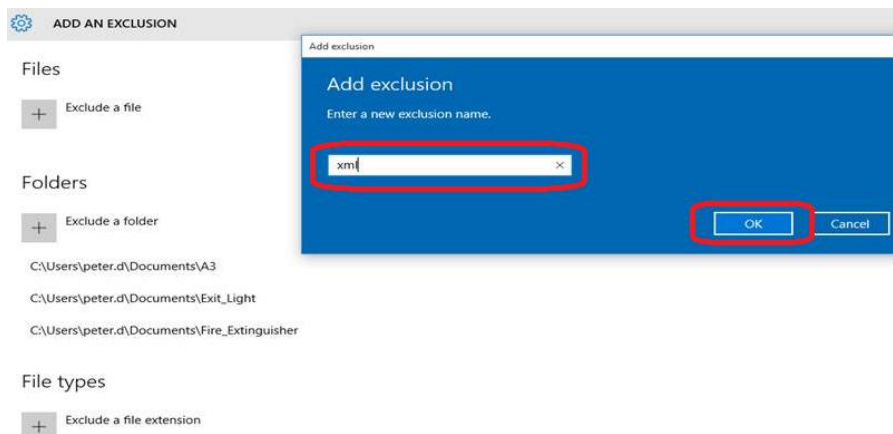


9. Repeat the above steps for the **Fire_Extinguisher**, **Exit_Light** and **AIRS** folders.

10. Folders will be listed as excluded.



11. Select **Exclude a file extension.**

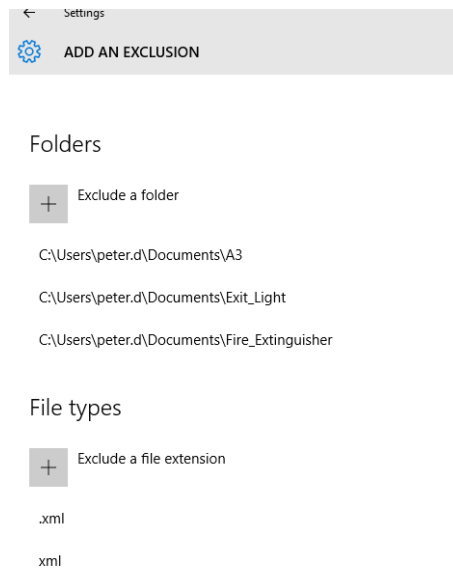


12. Enter type **xml**.

13. Click **OK**.


14. Repeat for type **.xml**.

15. File extensions are listed as excluded.



Access the EEL App

1. Ensure the tablet is connected to Wi-Fi / mobile data.

2. Press the icon .

1. At the logon screen, enter your User ID and password:

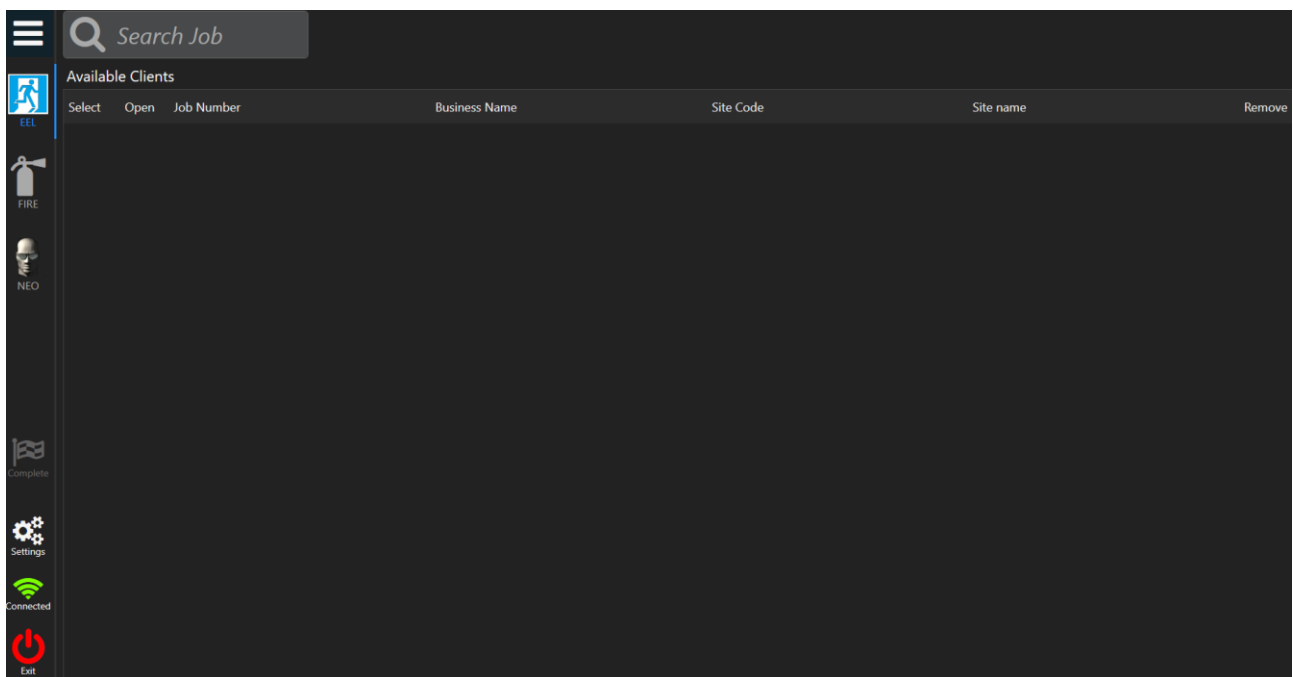
- User ID is your Tech Id
- Password = 1234

2. Press **Log In**. The AIRS suite opens.

3. Press on the 'EEL' tab on the left side of the screen.



4. The 'Available Clients' screen opens.

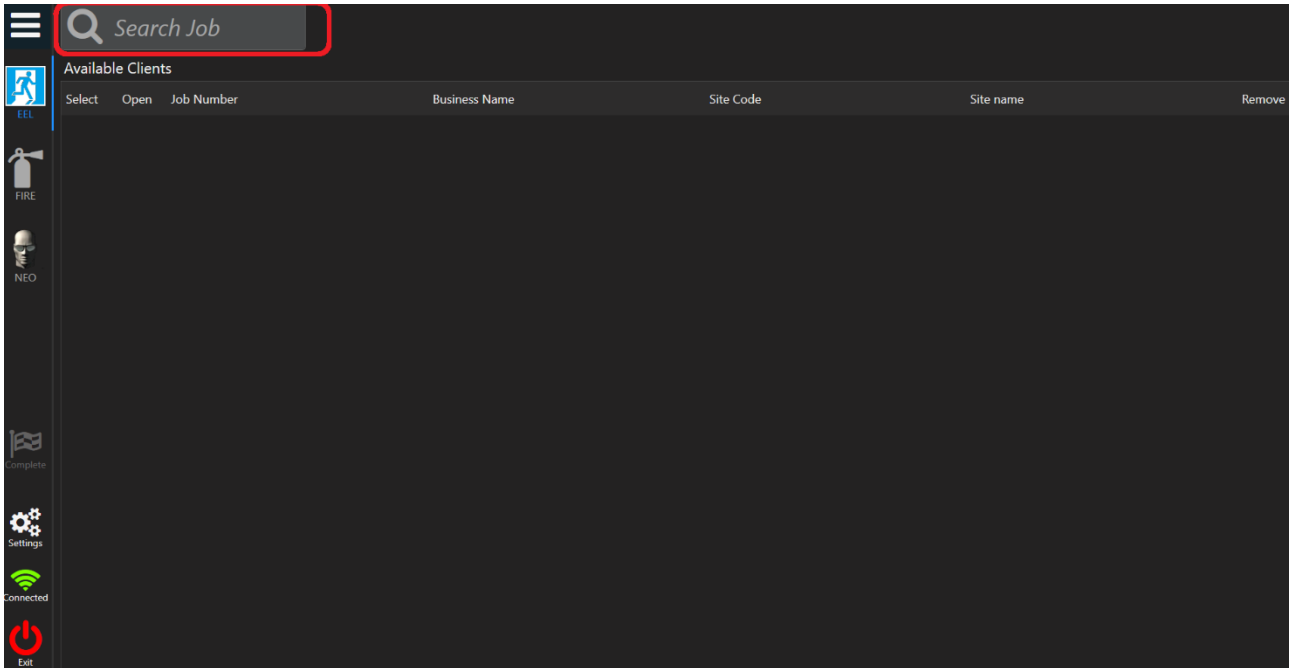


Note: Ensure the Wi-Fi icon is green. If it is red, click on the icon to reconnect.

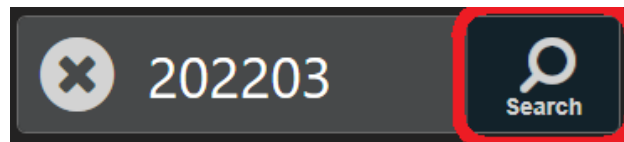
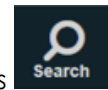
Jobs

Search for a Job

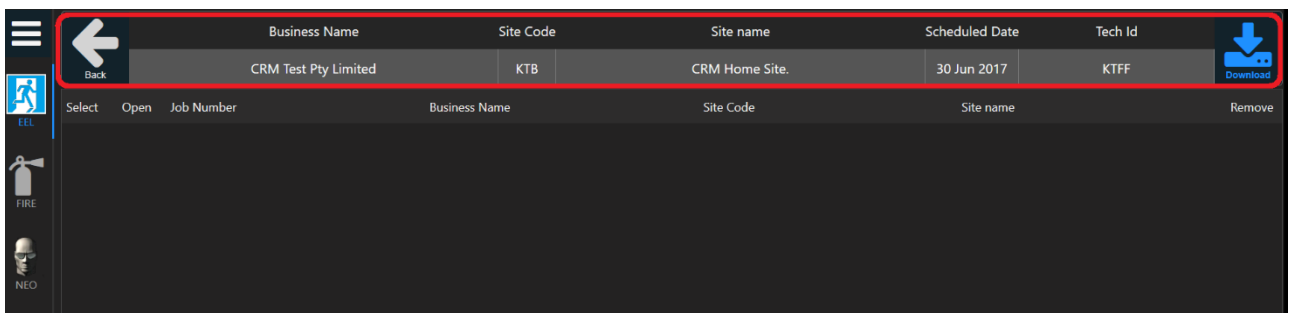
1. Enter the job number in the 'Search Job' box at the top of the screen.



2. Once a job number is entered, the 'Search' button appears. Press



3. The job appears at the top of the screen.

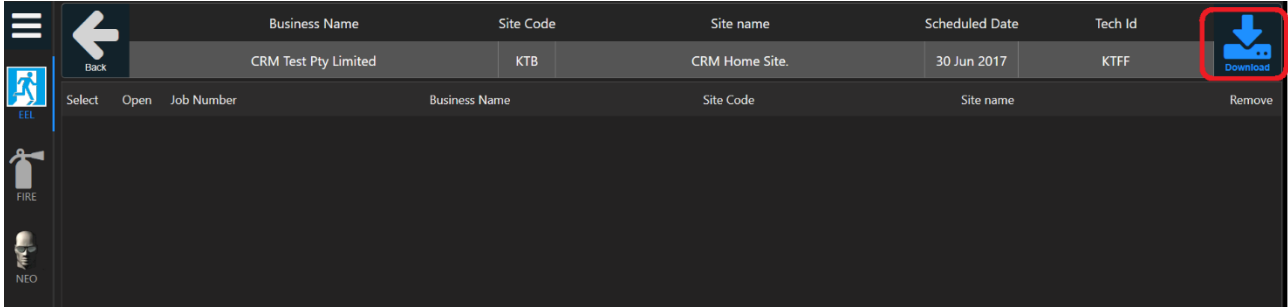


Download a Job

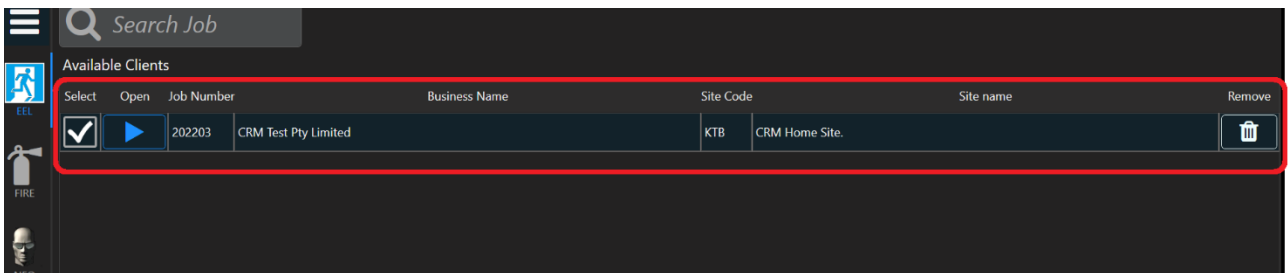
A job must be downloaded before it can be opened.



1. Press .

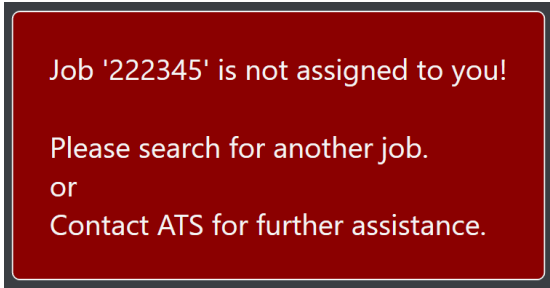


2. The job is downloaded.



Note:

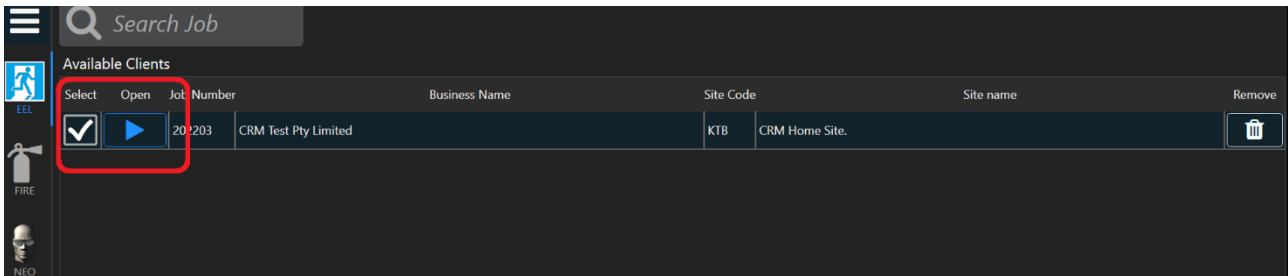
When attempting to download a job, the logged in tech ID is checked against work order technician list. If you are not in the list, you will not be able to download the job. This helps prevent accidentally downloading an incorrect job.



3. The job is now downloaded and can be opened.

Open a Job

1. Ensure the job is selected.



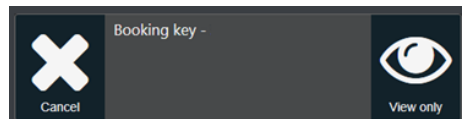
2. Press .

Note: The 'Open' icon will be inactive until a job is selected.

3. Enter the Booking Key

- When opening a job in AIRS, a Booking Key is now required.
- This is generated in the booking in the Field Service app once the safety checklist has been completed.

(Refer to the 'M365 Field Service Manual' document for more details.)



- Enter the Booking Key into AIRS.
- Once the booking key is entered into one of the AIRS apps, the job can be opened in any of the apps on that day.

Note: A Booking Key is required per booking per day.

4. The job opens displaying the 'Selected Client Switchboards' screen. This shows the downloaded switchboard and circuit data.

Selected Clients Switch Boards Currently Logged in : Kevin Taggerboy

Back
Quick Start
Scan
Time Sheet
Table View
Summary

| Site | Building | Level | Room | Location | Switchboard | Circuit Description/ Zone | CB ID | Test |
|------|-------------|--------------|----------|----------|-------------|---------------------------|-------------|------|
| 8234 | 1 | 1 | 1 | 1 | 02May2017 | 2 | 2 | 6m |
| 8234 | 1 | 1 | 1 | 1 | 02May2017 | Test | Test | 6m |
| 8234 | Office | 1 | Workshop | Workshop | Sabcd | Circuit1 | 1234567 | 6m |
| 8234 | Office | 1 | Workshop | Workshop | Sabcd | Circuit3 | 123313 | 6m |
| 8234 | Office | 1 | Workshop | Workshop | Sabcd | Circuit2 | 7654321 | 6m |
| 8234 | Office | 1 | Workshop | Workshop | Sabcd | Office | Office12345 | 6m |
| 8234 | 1 | 1 | 1 | 1 | DB1 | 1 | 1 | 6m |
| 8234 | ATS Office | Gnd | Workshop | Workshop | SWB1 | Workshop Circuit | CBSWB1 | 6m |
| 8234 | BBB | BBB | BBB | BBB | BBB | BBB1 | BBB | 6m |
| 8234 | Head Office | Ground Floor | Stores | Cupboard | SB1 | Exit Lighting | CB28 | 6m |

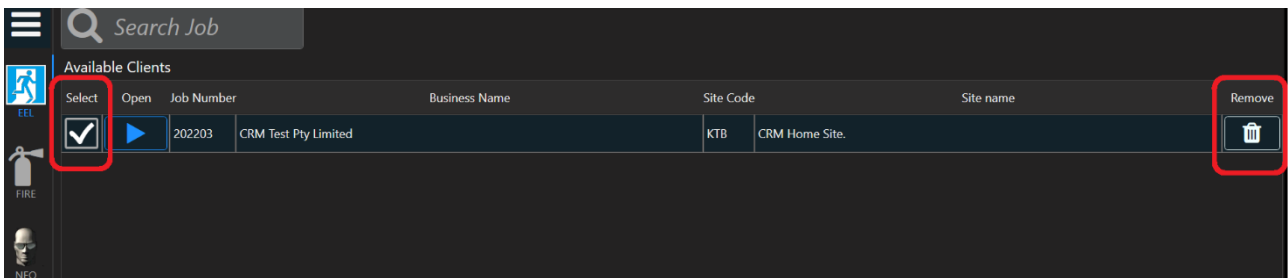
New SwitchBoard
Edit SwitchBoard
Delete SwitchBoard
New Circuit
Edit Circuit
Delete Circuit
Upload
Open

Note: If the required switchboard does not appear, refer to the section '[Add a Switchboard](#)'.

- Assets can now be tested. Refer to the section '[Testing](#)'.

Remove a Job

1. Ensure the required job is selected.



2. Press .

Note: The 'Remove' icon will be inactive until a job is selected.

Testing

There are 2 parts to testing:

- Visual testing
- Timer testing

A visual test must be carried out before a timer test.

Visual and timer test results can be entered on the circuit plan or table view screen.

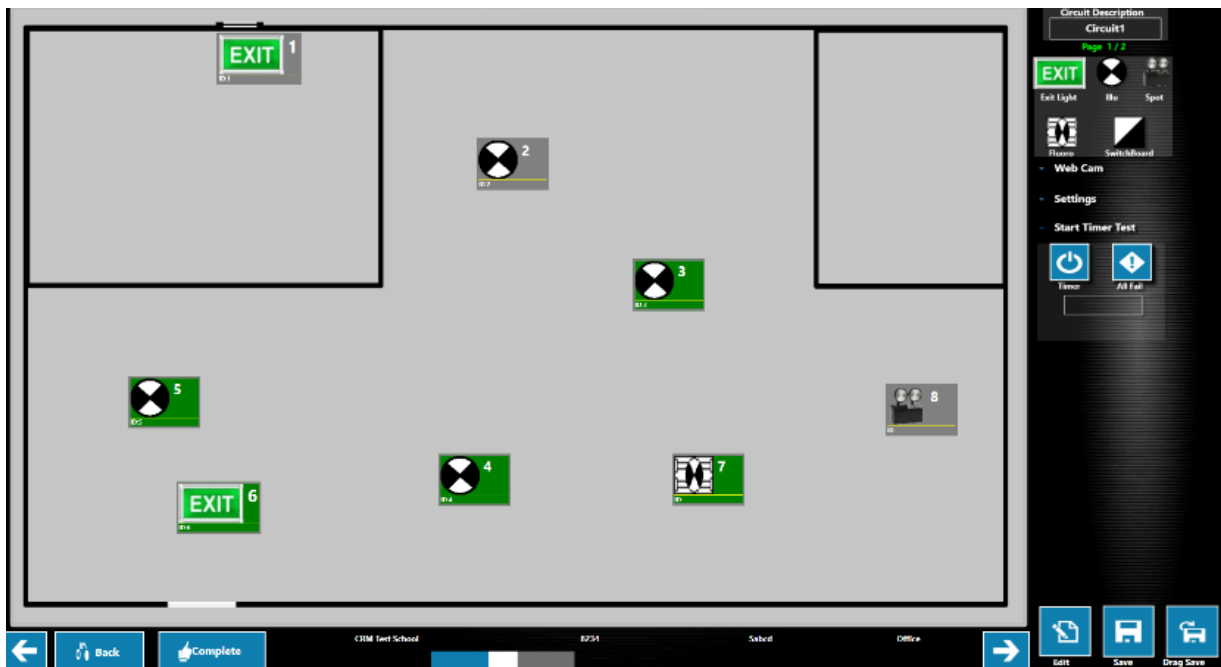
Visual Test

Using the Circuit Plan

1. Press in the checkbox to select a circuit on the 'Selected Clients Switchboards' screen.

2. Press .

3. The circuit plan displays.



4. If the asset passes the visual test, press or click on the asset icon. The icon becomes green.


5. If the asset fails the visual test, press and hold or double click on the icon to open the test result screen. Or right click on the asset icon and choose **Pass / Fail** from the menu.

6. Use the slider bar to change the status to fail.

| Test | Result | StartTime | Fail Description | Action Repaired | Parts | Edit |
|------|--------|---------------------|------------------|-----------------|-------|---|
| Time | Fail | 2015-10-20T11:10:14 | | No | |  |

7. Refer to the section '[Failed Assets](#)' if further details are required.



8. Press  to return to the circuit plan.

9. The background colour of the icon indicates the status:



Grey = untested



Green = pass



Red = fail

10. Press  once all tests are completed to return to the 'Selected Client Switchboards' screen.

Notes:

- It is possible to open plans for multiple circuits.
 - Use the top checkbox on the 'Selected Clients Switchboards' screen to select all circuits.
 - The company / site / switchboard details are shown at the bottom of the circuit plan screen.
 - Use the left and right arrows in the bottom corners to scroll between the plans.




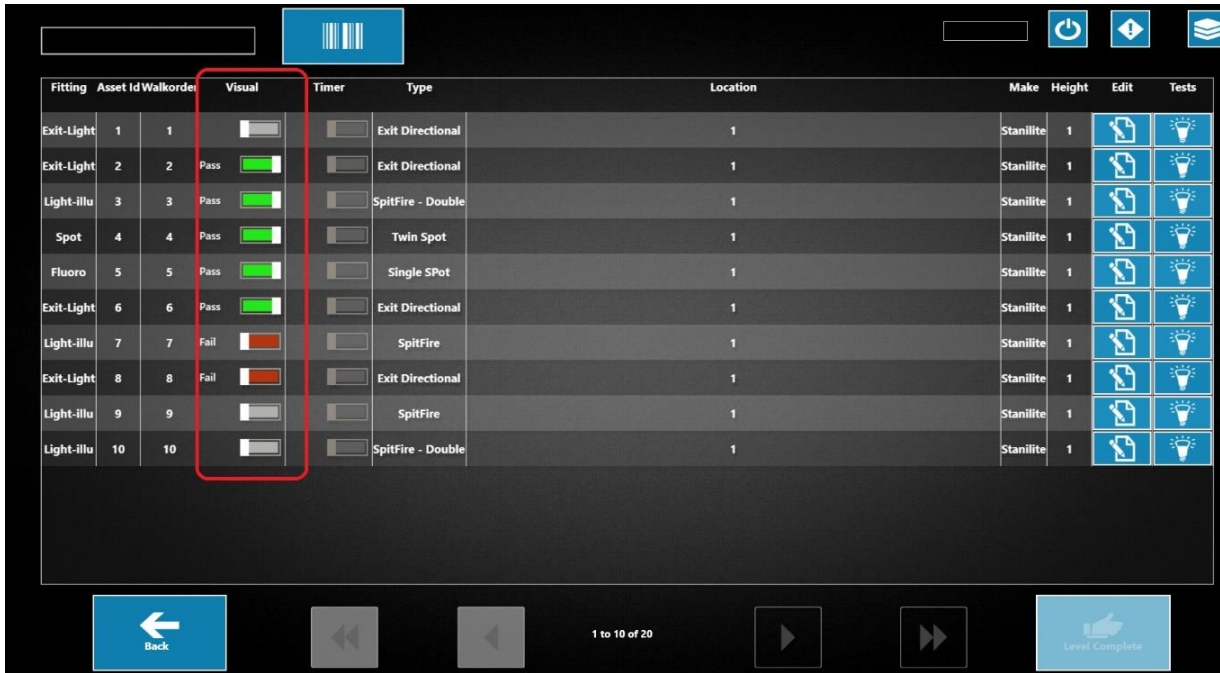
- The number of plans for a circuit is indicated in the top right corner of circuit plan screen. The circuit name and page number are displayed.



Using Table View

1. Press in the checkbox to select a circuit on the 'Selected Clients Switchboards' screen.

2. Press  at the top of the screen.



3. The test status is indicated as follows:

 = Untested


Pass  = Pass

Fail  = Fail

4. Use the slider bar in the 'Visual' column to change the pass/ fail status of the asset. Or click once for a pass, double click for a fail.

5. If changing to a fail status, the test results screen is displayed. Refer to the section ['Failed Assets'](#) if further details are required.

| Test | Result | StartTime | Fail Description | Action Repaired | Parts | Edit |
|-------|--|----------------------|------------------|-----------------|-------|---|
| Visua | Fail  | 21/15-10-20T10:07:00 | | No | |  |

6. Press  to return to the table view.

7. Press  once all changes are completed to return to the 'Selected Clients Switchboards' screen.

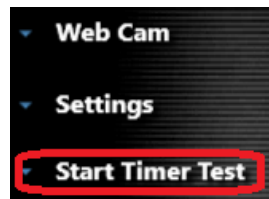
Timer Test

Multiple timers can be running at a time on different circuits. Active timers can be seen on the 'Selected Clients Switchboards' screen:

| Site | Building | Level | Room | Location | Switchboard | Circuit Description/ Zone | CB ID | Test |
|------|----------|-------|----------|---------------|-------------|---------------------------|-------------|------------------|
| 8234 | Workshop | Gnd | Workshop | Workshop Back | Swb1 | Swbcircuit | Circuit1234 | 6m 01h29m:41s |
| 8234 | Workshop | Gnd | Workshop | Workshop | 23Mayswb | 5 | 5 | 6m |
| 8234 | Workshop | Gnd | Workshop | Workshop | 23Mayswb | 1 | 1 | 6m |
| 8234 | Workshop | Gnd | Workshop | Workshop | 23Mayswb | 2 | 2 | 6m 01h29m:54s |

Using the Circuit Plan

1. Press **Start Timer Test** on the circuit plan screen.



2. Press  to start the timer.



3. A 90-minute countdown timer starts.
4. All assets have a pass status by default. The asset must have had a visual test to allow a timer test.
5. If an asset fails the timer test, press on it. The icon changes to red. The colour of the icon indicates the test status:



Visual pass. Timer pass.




Visual pass. Timer fail.



Visual fail. Timer fail.

6. If changing to a fail status, refer to the section ['Failed Assets'](#) if further details are required.

7. To stop the timer test:

Press  All timer results for the circuit will be deleted.


Press  to automatically fail all assets.

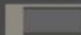
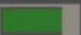
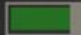





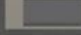
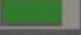
8. At the end of 90 minutes (if the timer has not been manually stopped) the test will finish. Restart the timer if more testing time is required.




9. Press  once all tests are completed to return to the 'Selected Client Switchboards' screen.

Note: It is necessary to stop all timers before closing the app.

Using Table View

1. Press  in the top right of the table view screen.
2. A 90-minute countdown timer starts.
3. All assets have a pass status by default. The asset must have had a visual test to allow a timer test.
4. If an asset fails the timer test, use the slider bar in the 'Timer' column to change the status to fail. Or click to change the status.

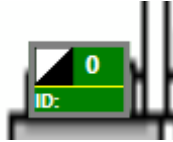
| Asset Type | Walkorder | Visual | Timer |
|-------------|-----------|--|--|
| switchboard | 0 |  | Pass  |
| Exit-Light | 1 | Pass  | Pass  |
| Exit-Light | 2 | Pass  | Fail  |
| Exit-Light | 3 | Fail  | Pass  |
| Light-illu | 4 |  | Pass  |

5. If changing to a fail status, refer to the section ['Failed Assets'](#) if further details are required.
6. To stop the timer test:
Press  All timer results for the circuit will be deleted.
Press  to automatically fail all assets.
7. At the end of 90 minutes (if the timer has not been manually stopped) the test will finish. Restart the timer if more testing time is required.
8. Press  once all tests are completed to return to the 'Clients Switchboards' screen.

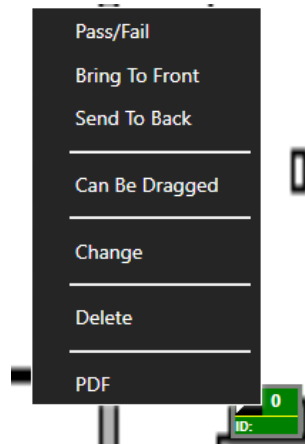
Note: It is necessary to stop all timers before closing the app.

Switchboard Fail

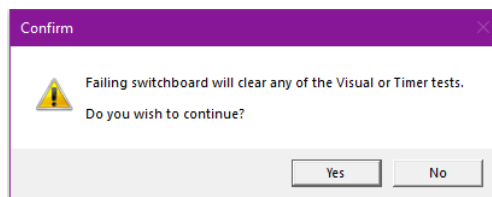
- EEL switchboards can now be failed when there is no dedicated EEL circuit, instead of having to fail all the fittings and add a photo for each one when there is nothing wrong with the fittings.
- Failing the switchboard ends the testing.
- By default, the switchboard will be in a passed state and nothing more needs to be done if it is a pass.



1. If the board fails, no other testing is possible. Press and hold, or right click on the switchboard and select the Pass/Fail option.



2. Confirm you wish to continue.



3. Add the required photos and save.


Failed Assets

For failed assets, it may be necessary to add details of the issue, or it may be possible to repair the asset.

Add Failure Details

1. On the circuit plan screen, press and hold or double click the icon to open the test result screen. Or right click on the asset icon and choose **Pass / Fail** from the menu.

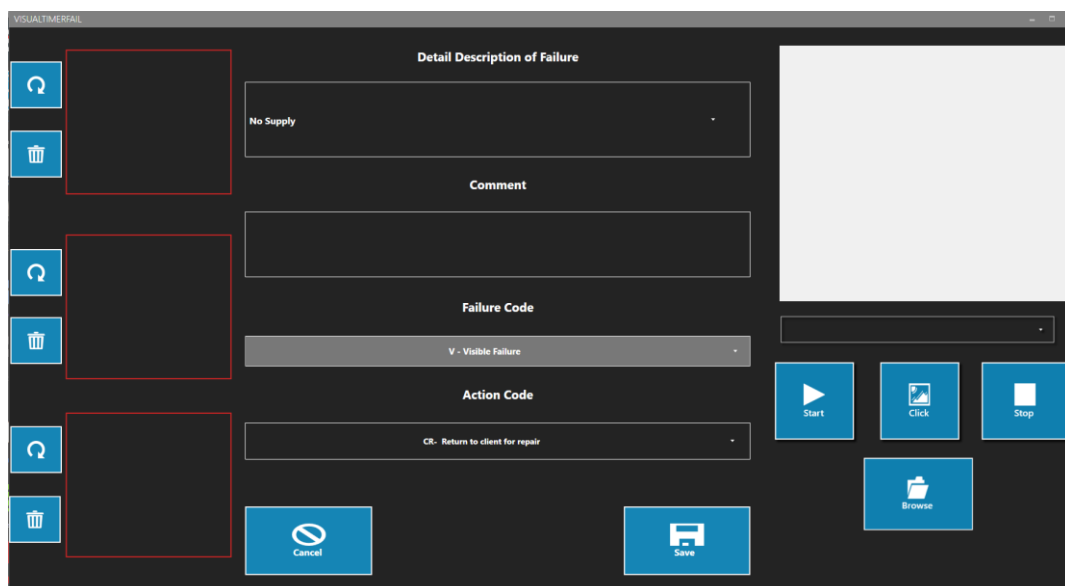
On the table view screen, press  for the required asset.

2. Ensure the status is set as 'Fail' in the 'Result' column.
3. Press  against the visual or timer test to open the failure details screen.



| Test | Result | StartTime | Fail Description | Action Repaired | Parts | Edit |
|-------------|--------|---------------------|----------------------|-----------------|-------|---|
| Visual Fail | Fail | 2017-06-08T11:12:37 | No Supply | CR | No |  |
| Timer Tests | | | | | | |
| Test | Result | StartTime | Fail Description | Action Repaired | Parts | Edit |
| Timer Fail | Fail | 2017-06-06T10:09:02 | Less Than 90 Minutes | ORR | No |  |

4. Use the 'Detail Description of Failure' box to add comments about the failure.



VISUALTEMPERALL

Detail Description of Failure

No Supply

Comment

Failure Code

V - Visible Failure

Action Code

CR - Return to client for repair

Start Click Stop

Browse

Cancel Save

5. 'Failure Code' is set as 'E – Electrical Failure' or 'V – Visual Failure'. It is not possible to change this.
6. Change the 'Action Code' using the dropdown arrow if required.
7. Use the webcam to capture **3 images** of the failed asset. Or browse to choose a previously saved photo. Photos appear in the boxes on the left-hand side.



Press to start the webcam.



Press to take a photograph.



Press to stop the webcam.

Note:


- If you cannot take a photo with either your laptop or a connected web cam, use your mobile phone and either have it paired with your computer or send it from your phone as an email or through Dropbox or OneDrive.
 - It is **mandatory** to provide a photo.
 - The option of 'Camera not connected' has been removed.
8. Press **Save** when all failure details are entered.
 9. If a repair is possible, refer to the section '[Repairs](#)'.

Fix a Failed Asset

Repairs

1. On the circuit plan screen, press and hold or double click the icon to open the test result screen. Or right click on the asset icon and choose **Pass / Fail** from the menu.



On the table view screen, press  for the required asset.

2. Ensure the status is set as 'Fail' in the 'Result' column.



3. Press  against the visual or timer test.

| Test | Result | StartTime | Fail Description | Action Repaired | | Parts | Edit |
|--------|--------|---------------------|------------------|-----------------|----|-------|---|
| Visual | Fail | 2017-06-08T11:12:37 | No Supply | CR | No | |  |

| Timer Tests | | | | | | | |
|-------------|--------|---------------------|----------------------|-----------------|----|-------|--|
| Test | Result | StartTime | Fail Description | Action Repaired | | Parts | Edit |
| Timer | Fail | 2017-06-08T10:09:02 | Less Than 90 Minutes | ORR | No | |  |

Note:

The 'Add Repair' icon will be greyed out if:

- a) The asset has a pass status.
- b) No failure details have been entered for the asset. Refer to the section '[Add Failure Details](#)'.

4. Use the 'Detail Description of Failure' box to add comments about the repair.

Detail Description of Failure

No Supply

Failure Code
V - Visible Failure

Action Code
CR- Return to client for repair

| REPLACEMENT PART | PART NO | SELECT |
|---------------------|----------|--------------------------|
| F8W/T5 Tube | F8W/T5 | <input type="checkbox"/> |
| 10W Halogen Lamp | 10W HALO | <input type="checkbox"/> |
| 10W Cool White Tube | TLD 10W | <input type="checkbox"/> |
| 20W Halogen Lamp | 20A HALO | <input type="checkbox"/> |
| 20W Cool White Tube | | <input type="checkbox"/> |

Microsoft® LifeCam HD-3000

Start Click Stop

Browse

Cancel Add Part Save

5. Scroll through the 'Replacement Part' list to locate the required part.

Note: If the replacement part does not exist in the list, refer to the section '[Add Replacement Part](#)'.

6. Press in the checkbox to select the part(s) required.

7. Use the webcam to capture an image of the repaired_asset. Or browse to choose a previously saved photo. The photo appears in the white box.



Press to start the webcam.




Press to take a photograph.



Press to stop the webcam



8. Press .

9. If repairing a visual failure, the status of the asset automatically changes to a visual pass. This cannot be changed.

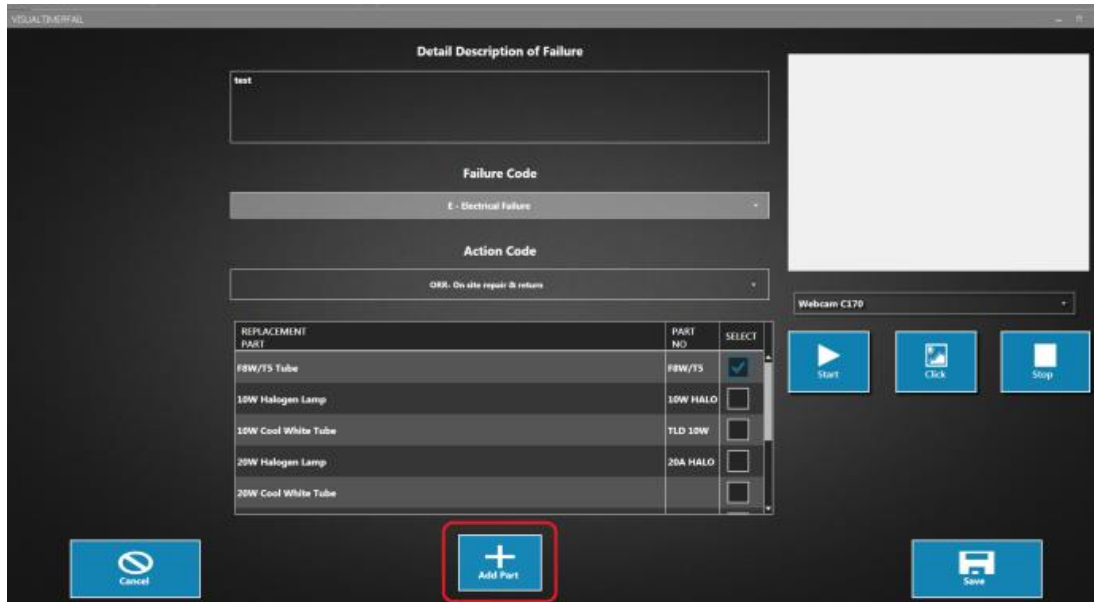
Or:

If repairing a timer test failure, it is necessary to re-do the timer test for the asset.

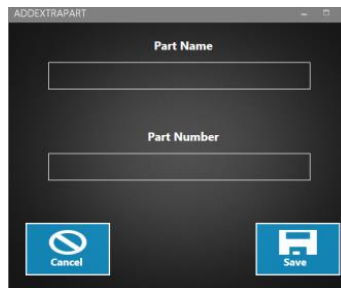
Add Replacement Part



Use this section if a replacement part does not exist in the parts list when repairing an asset.

1. Press  on the 'Repair' screen.



2. Enter the part name and part number.



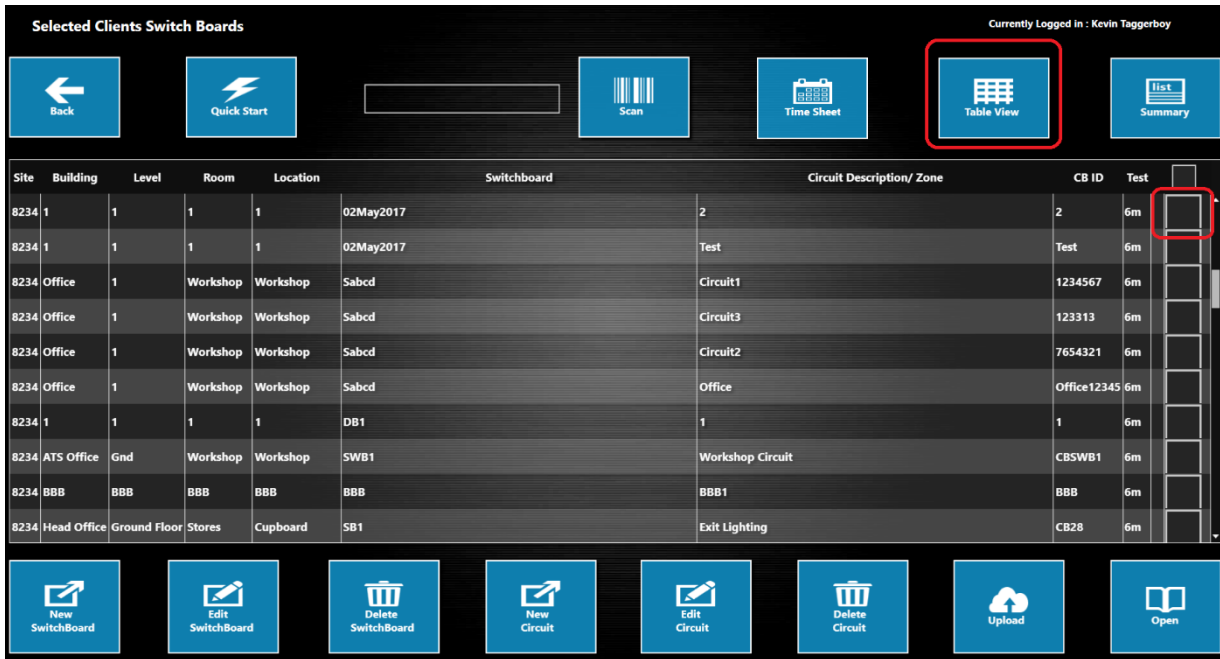
3. Press .
4. The new part appears in the 'Replacement Part' list.
5. Press in the checkbox to select the part.
6. Press  to return to the test results screen.


View Test Status of Assets

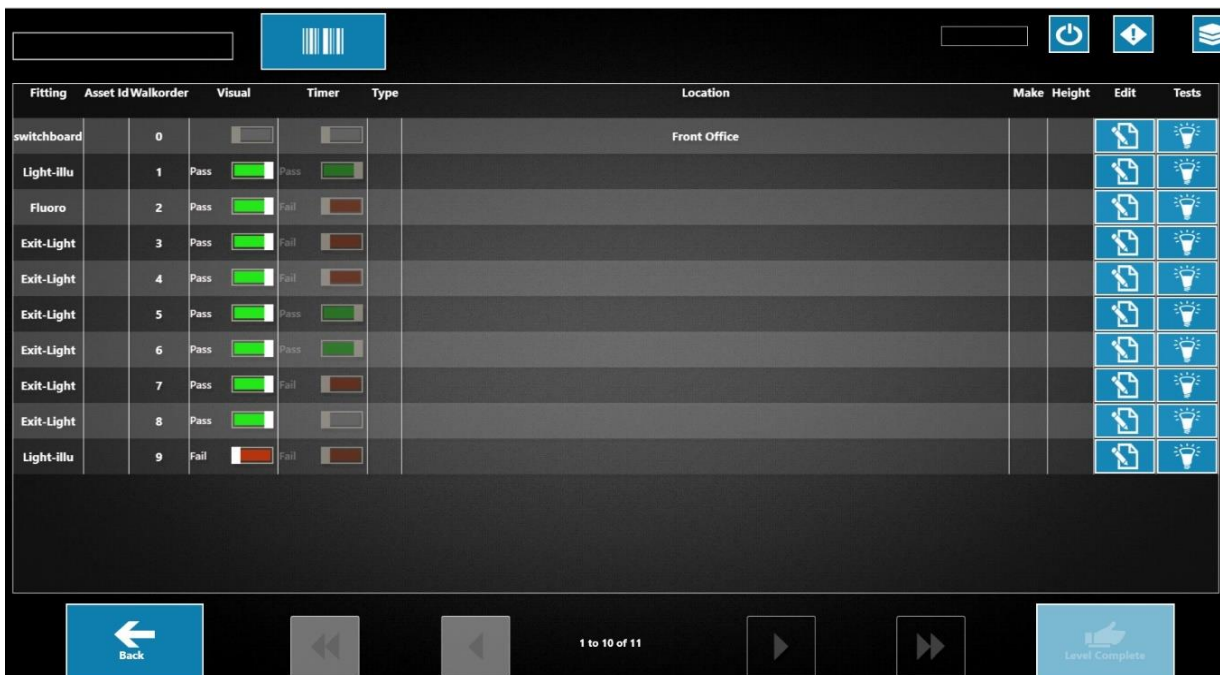
The test status of assets is displayed on the table view screen, circuit plan and summary screen.

Using Table View

1. On the 'Selected Client Switchboards' screen, press in the checkbox to select a circuit. It is only possible to select one circuit at a time.



2. Press . The table view screen opens displaying the assets and the status for the visual and timer test.



Note: Only 10 assets are displayed on one screen. Use the scroll arrows to move between pages. The number of assets on the circuit is displayed.




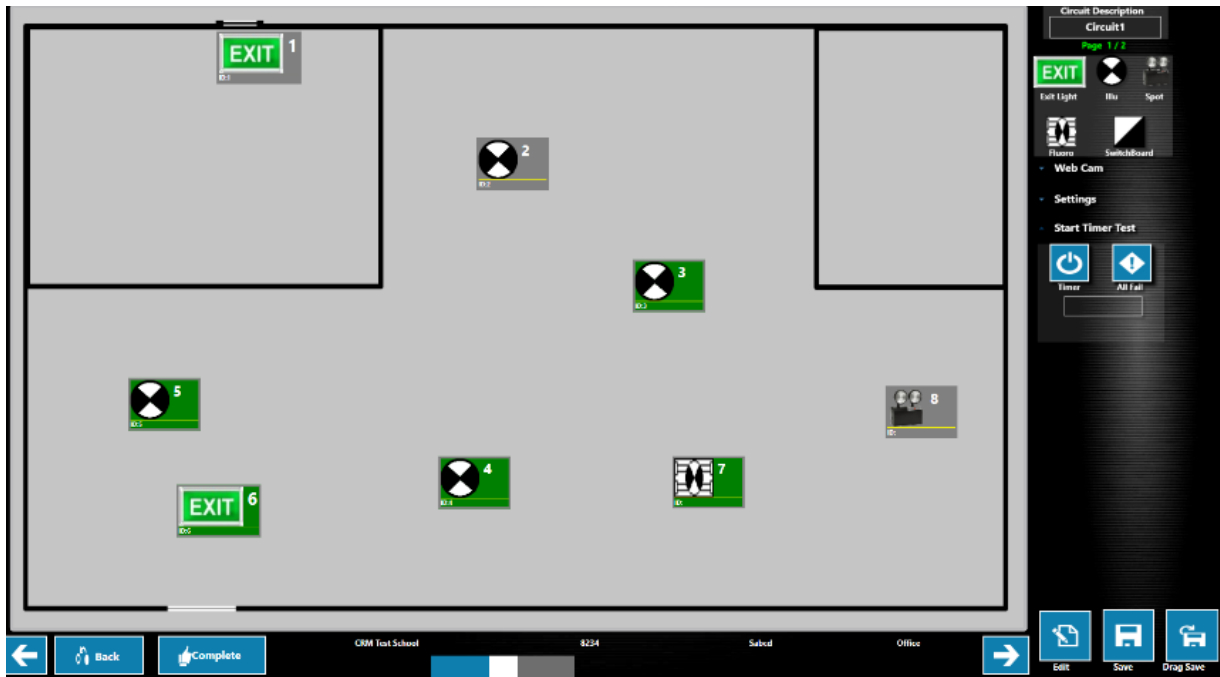
3. The status is indicated as follows:



4. Press  to return to the 'Selected Clients Switchboards' screen.

Using the Circuit Plan

1. On the 'Selected Client Switchboards' screen, press in the checkbox to select a circuit.
2. Press .
3. The circuit plan opens showing the status of the assets.




4. Test status is indicated by the background colour of the icon (visual test) and the outline (timer test). For example:

 Visual pass. Timer pass.

 Visual pass. Timer fail.

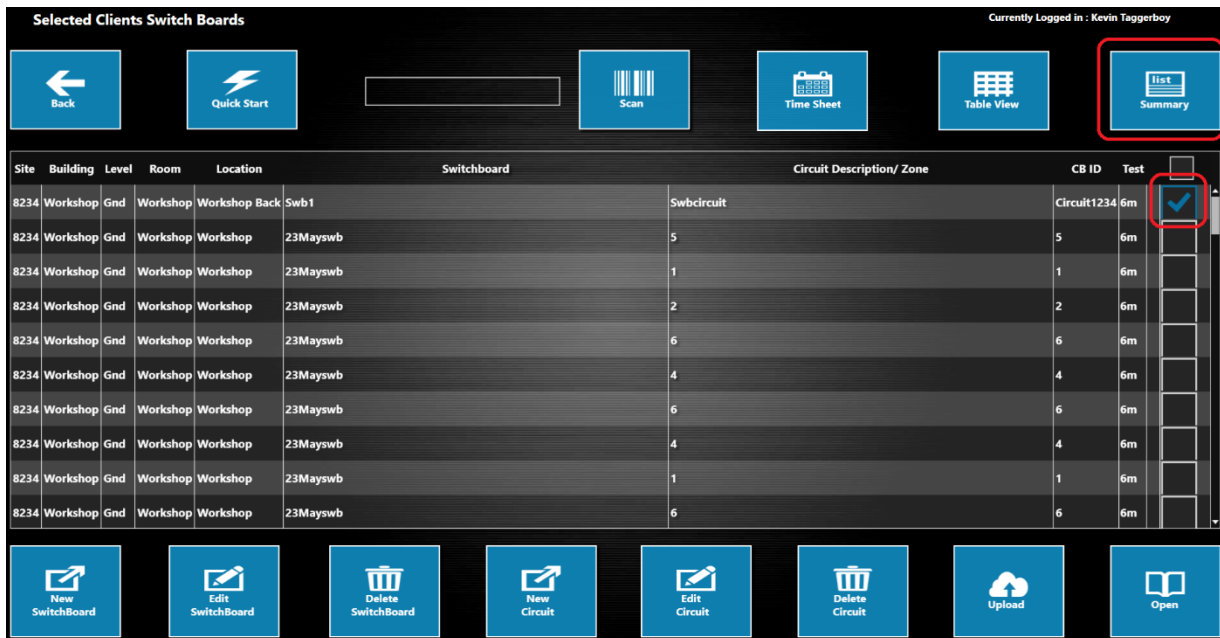
 Visual fail. Timer fail.

 Visual pass. Timer test not done.

 Untested asset.

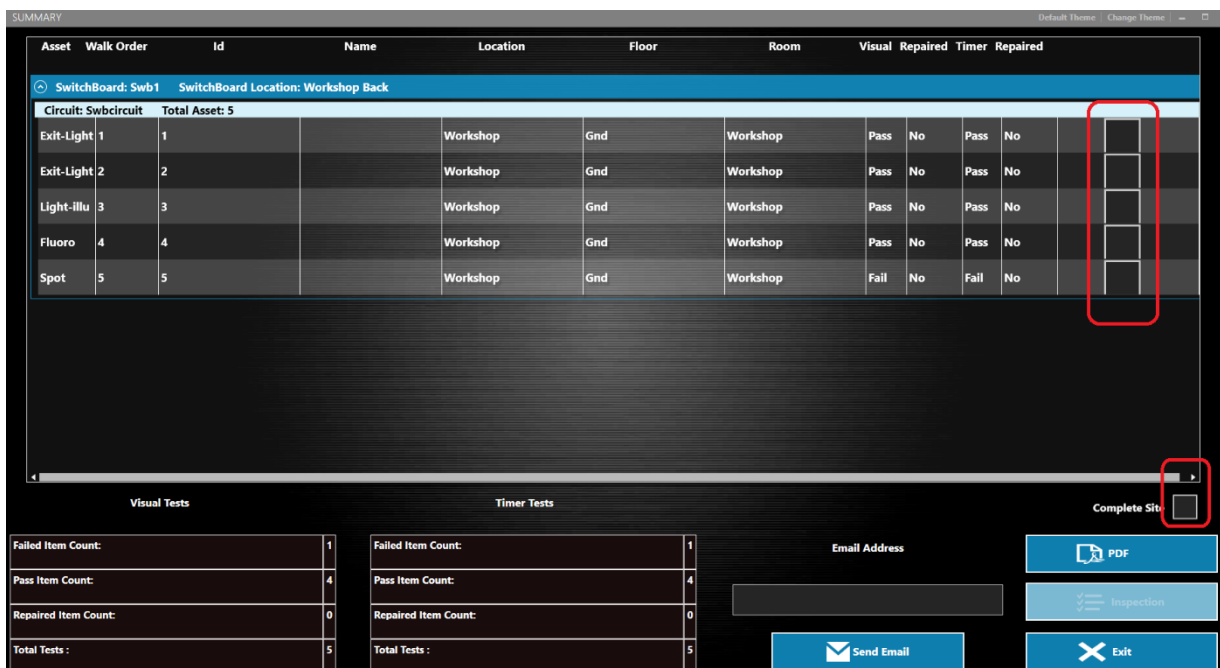
Using the Summary Screen

1. On the 'Selected Client Switchboards' screen, press in the checkbox to select the required circuit.




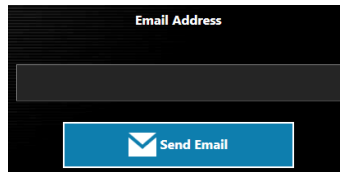
2. Press .


3. The summary screen opens displaying information for the selected circuit.



4. Use the checkbox 'Complete Site' to view all circuits on the site if required.

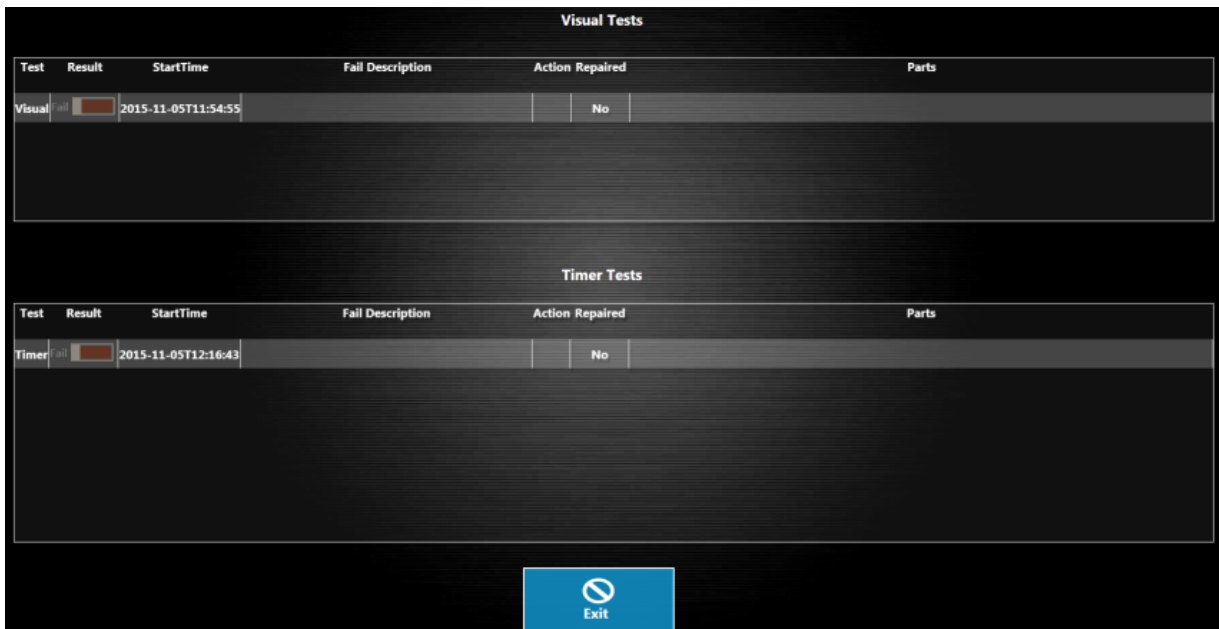
- Use the scrollbar to scroll up and down the list.
- To email the summary information, enter an email address and press .





- To view the test results for an asset, select an asset and press .


Note: Select one asset only or the 'Inspections' button will not be active.

- The 'Asset Inspection Summary' window opens.



- Press  to return to the summary screen.
- Press  to return to the 'Selected Clients Switchboards' screen.

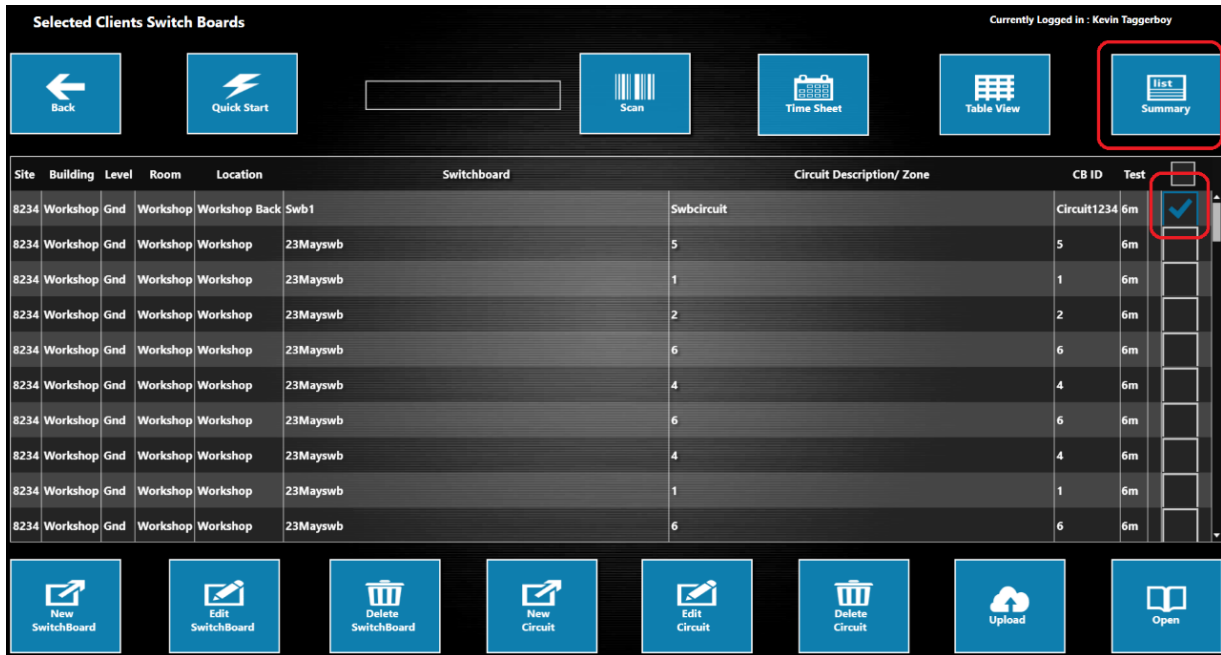
View Last Test Results

1. Use the icon  on either the table view screen or in the 'Settings' menu on the circuit plan.
2. The icon toggles between current results and last test results.
3. The circuit plan changes to red when displaying last results.

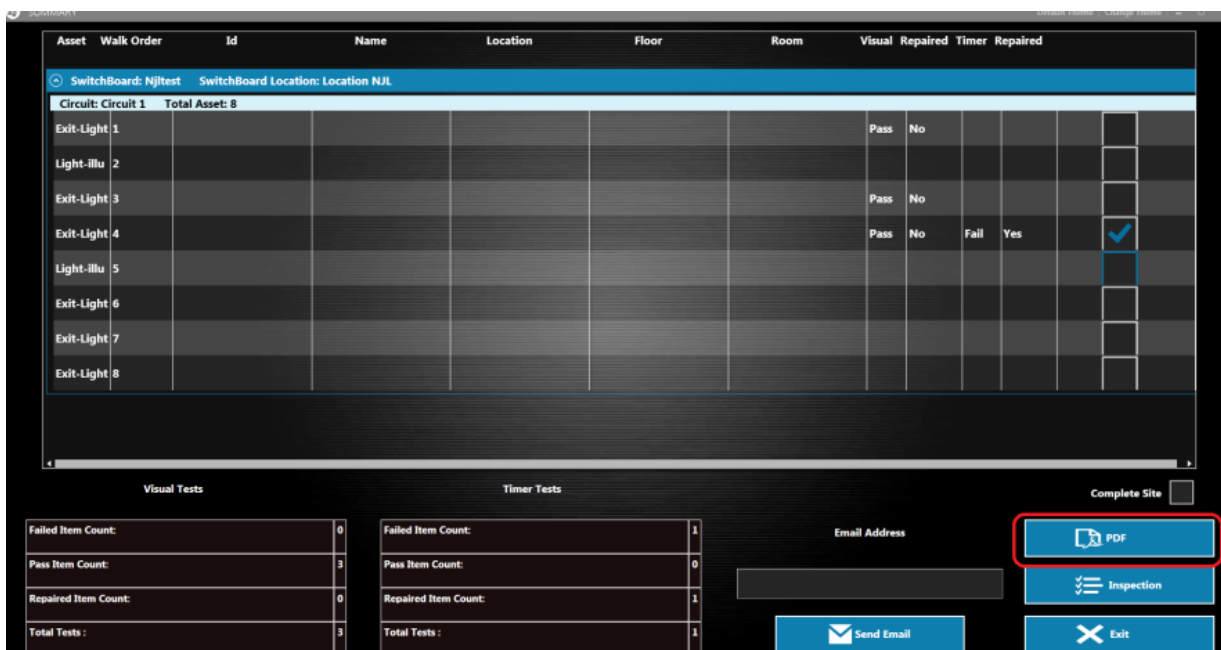
Reporting

PDF documents can be created from the summary screen.

1. On the 'Selected Client Switchboards' screen, press in the checkbox to select the required circuit. Multiple circuits can be selected.



2. Press .
3. The summary screen opens. Press .



4. Choose the required location to save the file.
5. Press **OK**.
6. Open the PDF report from the chosen location.
7. An example report:

| <u>Visual</u> | |
|---------------------|---|
| Failed Item Count | 4 |
| Pass Item Count | 3 |
| Repaired Item Count | 0 |
| Total Tests | 7 |



| <u>Timer</u> | |
|---------------------|---|
| Failed Item Count | 1 |
| Pass Item Count | 5 |
| Repaired Item Count | 0 |
| Total Tests | 6 |

| <u>Assets</u> | | | | | | | |
|----------------------|------|----|----------|--------|--------|-------|--------|
| Switchboard: Niltest | | | | | | | |
| Circuit: Circuit 3 | | | | | | | |
| Type | W.O. | Id | Location | Visual | Repair | Timer | Repair |
| Exit-Light | 1 | | | Fail | No | Pass | No |
| Exit-Light | 2 | | | Fail | No | Pass | No |
| Exit-Light | 3 | | | Fail | No | Fail | No |
| Light-illu | 4 | | | Pass | No | | No |

8. Press  to return to the 'Selected Clients Switchboards' screen.

Complete a Circuit


IMPORTANT: Ensure all required assets have been tested BEFORE completing a circuit. Assets displayed in grey on the asset plan have NOT been tested.

1. There are 2 ways of completing a circuit:
 - a) From the table view screen, press .
 - b) From the circuit plan, press .
2. The 'Selected Client Switchboards' screen opens.
3. Completed circuits are highlighted in blue.

| | | | | | | | | | | |
|-----------------|--------|--------|--------------|---------|-----------|----------|-----|----|------------------|--|
| KTB Head Office | Ground | Room 1 | Location NJL | Njltest | Circuit 1 | Testnjl | 6m | No | Lighting Circuit | |
| KTB Head Office | Ground | Room 1 | Location NJL | Njltest | Circuit2 | Testnjl2 | 12m | No | Lighting Circuit | |

Re-open a Completed Circuit

It is possible to re-open a completed circuit before uploading.

1. Select the circuit from the 'Selected Client Switchboards' screen.
2. Press .
3. The following message appears:

Confirmation!

Rows in blue are already completed jobs, Do you want to reopen it?

4. Press **Ok**.
5. The circuit plan screen opens.
6. Make the required changes and complete the circuit as above.

Timesheets and Sign-Offs

1. On the 'Available Clients' screen, press in the checkbox to select the job / switchboard.



2. Press **Time Sheet**.

3. Ensure the date selected in the top left corner is correct. Press the calendar icon to change the date if required.

A screenshot of the 'TIME SHEET' application interface. The top bar shows 'Sign Off Date' (22/10/2015), 'Start Time' (00:00), and 'Finish Time' (00:00). Below this is a 'Time Difference' section with columns for 'Hr' and 'Min'. The 'Normal' row shows 00:00. Below the 'Time Difference' section are four buttons: 'Delete', 'Today's SignOff', 'Complete SignOff', and 'Exit'. At the bottom are two more buttons: 'Save' and 'Exit'.

4. Enter time details for the job.



5. Press **Today's SignOff** to sign-off for the day. This is used if the job runs over several days.

Or:



Press **Complete SignOff** to sign-off a completed job.

6. The sign-off form opens.
7. Enter details as required on the Sign-off form. 'Contact' and 'Email To' are compulsory fields.

Back

Date: 03/12/2015 Job Number: nj11234
 Company: CRM Test Pty Ltd
 Address: Suite 123,CRM Avenue,1234
 Contact: Telephone:

Special Instructions:

| Type | Quantity |
|------------|----------|
| Exit-Light | 2 |
| Light-illu | 1 |

Total Units:3

| Description | Quantity |
|-------------|----------|
|-------------|----------|

Comments:

The information within this certificate is correct at the time of testing. Quotes Required

Technician Client

Save Sign Clear Save Sign Clear

Tech Name Client Name

Email To

Back Save Save & Email

8. Press **Save** to send to the ATS office only.

Or:

Press **Save & Email** to send to the client and the ATS office.

9. Press **Back** (at the top or bottom of the form) once complete.

Upload Test Results


Test results are initially saved locally on the tablet. It is necessary to upload the data into the database.

IMPORTANT: Ensure all required circuits and timesheets are complete before uploading or test data could be lost.

1. For each completed circuit, press in the checkbox to select it. Completed circuits are highlighted in blue.

| | | | | | | | | | | |
|-----------------|--------|--------|--------------|---------|-----------|----------|-----|----|------------------|--------------------------|
| KTB Head Office | Ground | Room 1 | Location NJL | Njttest | Circuit 1 | Testnjl | 6m | No | Lighting Circu | <input type="checkbox"/> |
| KTB Head Office | Ground | Room 1 | Location NJL | Njttest | Circuit2 | Testnjl2 | 12m | No | Lighting Circuit | <input type="checkbox"/> |

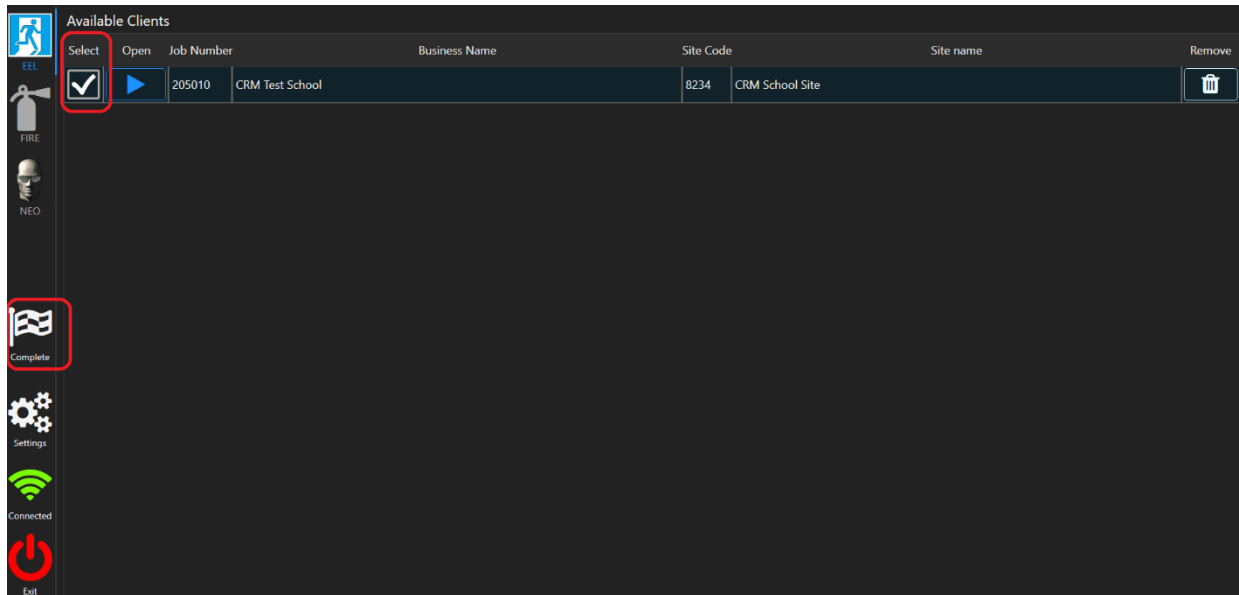


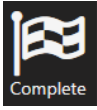
2. Press .
3. Press **OK** on the confirmation message.
4. The uploaded circuits disappear from the list.

Complete a Job

IMPORTANT: Ensure all test data is uploaded before completing a job. Otherwise all test data will be lost.

1. On the 'Available Clients' screen, select the job.



2. Press .

3. The job disappears from the list.

Note:

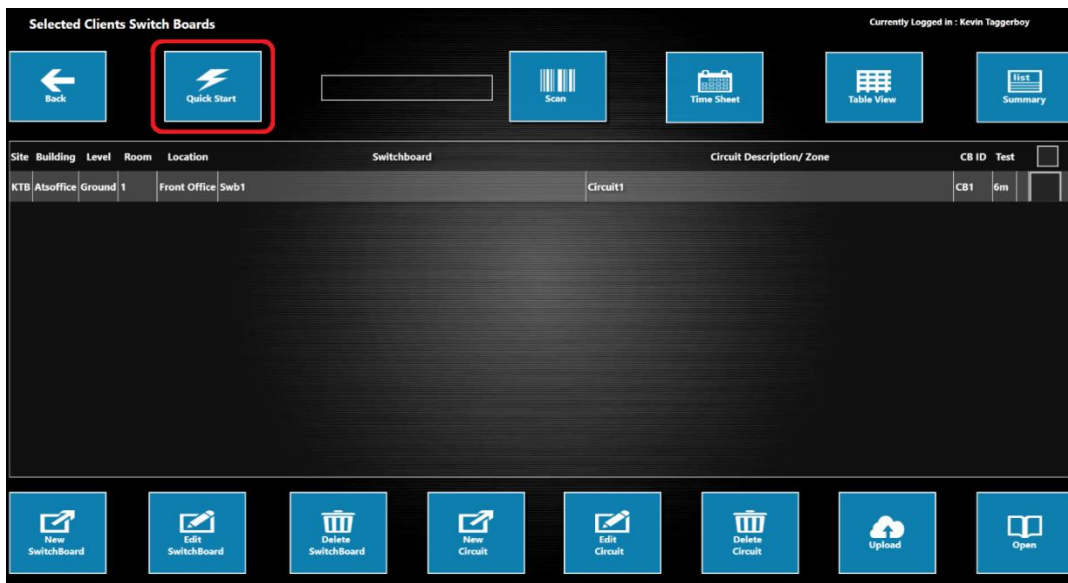
- If the same job exists in other tabs, it will check if pending data exists or not. If data exists, the job cannot be closed until any pending data has been uploaded.
- If the same job exists in other tabs, however no pending data exists, the application will display a message box to warn that closing the job will remove the job from those tabs as well.
- If a job is opened in a tab (e.g. EEL) and also opened in another tab (e.g. Fire or NEO) it will not be possible to close the job and the 'Complete' button will be disabled.

Add a Switchboard

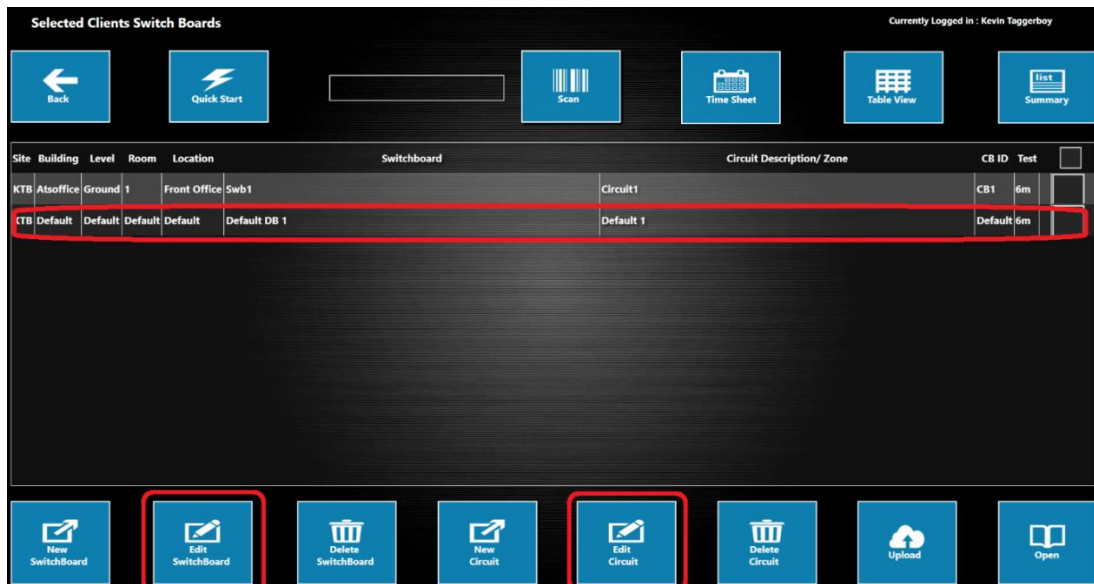
Quick Start

Use 'Quick Start' to add a new switchboard and circuit with default values. Details can be added after testing.

1. Press 



2. A switchboard and circuit are created with default values.



3. Use [Edit Switchboard](#) and [Edit Circuit](#) to change the default values when required.

IMPORTANT: It is necessary to change the default values before uploading otherwise it will not be possible to upload.

Create a Switchboard

1. Open the required job.
2. Press in the checkbox to select a site on the 'Selected Clients Switchboards' screen.


Selected Clients Switch Boards Currently Logged in : Kevin Taggerboy

Back Quick Start Scan Time Sheet Table View Summary

| Site | Building | Level | Room | Location | Switchboard | Circuit Description/ Zone | CB ID | Test |
|------|----------|-------|----------|----------|-------------|---------------------------|-------------|--|
| 8234 | Workshop | Gnd | Workshop | Workshop | Swb1 | Swbcircuit | Circuit1234 | 6m <input checked="" type="checkbox"/> |
| 8234 | Workshop | Gnd | Workshop | Workshop | 23Mayswb | 5 | 5 | 6m |
| 8234 | Workshop | Gnd | Workshop | Workshop | 23Mayswb | 1 | 1 | 6m |
| 8234 | Workshop | Gnd | Workshop | Workshop | 23Mayswb | 2 | 2 | 6m |
| 8234 | Workshop | Gnd | Workshop | Workshop | 23Mayswb | 6 | 6 | 6m |
| 8234 | Workshop | Gnd | Workshop | Workshop | 23Mayswb | 4 | 4 | 6m |
| 8234 | Workshop | Gnd | Workshop | Workshop | 23Mayswb | 6 | 6 | 6m |
| 8234 | Workshop | Gnd | Workshop | Workshop | 23Mayswb | 4 | 4 | 6m |
| 8234 | Workshop | Gnd | Workshop | Workshop | 23Mayswb | 1 | 1 | 6m |
| 8234 | Workshop | Gnd | Workshop | Workshop | 23Mayswb | 6 | 6 | 6m |

New SwitchBoard Edit SwitchBoard Delete SwitchBoard New Circuit Edit Circuit Delete Circuit Upload Open



3. Press .
4. Enter the switchboard details in the window that opens.

CRM Test Pty Ltd
RTS

Switchboard Floor/Level

Building Room

Location

Cancel Save



5. Press .
6. The switchboard is listed on the 'Selected Clients Switchboards' screen.

Create a Circuit

1. Press in the checkbox to select a switchboard on the 'Selected Clients Switchboards' screen.

Selected Clients Switch Boards

Currently Logged in : Kevin Taggerboy

| Site | Building | Level | Room | Location | Switchboard | Circuit Description/ Zone | CB ID | Test |
|------|----------|-------|----------|---------------|-------------|---------------------------|-------------|--|
| 8234 | Workshop | Gnd | Workshop | Workshop Back | Swb1 | Swbcircuit | Circuit1234 | 6m <input checked="" type="checkbox"/> |
| 8234 | Workshop | Gnd | Workshop | Workshop | 23Mayswb | 5 | 5 | 6m <input type="checkbox"/> |
| 8234 | Workshop | Gnd | Workshop | Workshop | 23Mayswb | 1 | 1 | 6m <input type="checkbox"/> |
| 8234 | Workshop | Gnd | Workshop | Workshop | 23Mayswb | 2 | 2 | 6m <input type="checkbox"/> |
| 8234 | Workshop | Gnd | Workshop | Workshop | 23Mayswb | 6 | 6 | 6m <input type="checkbox"/> |
| 8234 | Workshop | Gnd | Workshop | Workshop | 23Mayswb | 4 | 4 | 6m <input type="checkbox"/> |
| 8234 | Workshop | Gnd | Workshop | Workshop | 23Mayswb | 6 | 6 | 6m <input type="checkbox"/> |
| 8234 | Workshop | Gnd | Workshop | Workshop | 23Mayswb | 4 | 4 | 6m <input type="checkbox"/> |
| 8234 | Workshop | Gnd | Workshop | Workshop | 23Mayswb | 1 | 1 | 6m <input type="checkbox"/> |
| 8234 | Workshop | Gnd | Workshop | Workshop | 23Mayswb | 6 | 6 | 6m <input type="checkbox"/> |

2. Press .

3. Enter the circuit details in the window that opens.

CRM Test Pty Ltd

KTB


SB 13/10

Circuit Breaker ID: Month Test: 6m

Circuit Description: Control: Lighting Circuit

Cleaning:

Cancel Save

4. Press . The circuit is listed on the 'Selected Client Switchboards' screen.

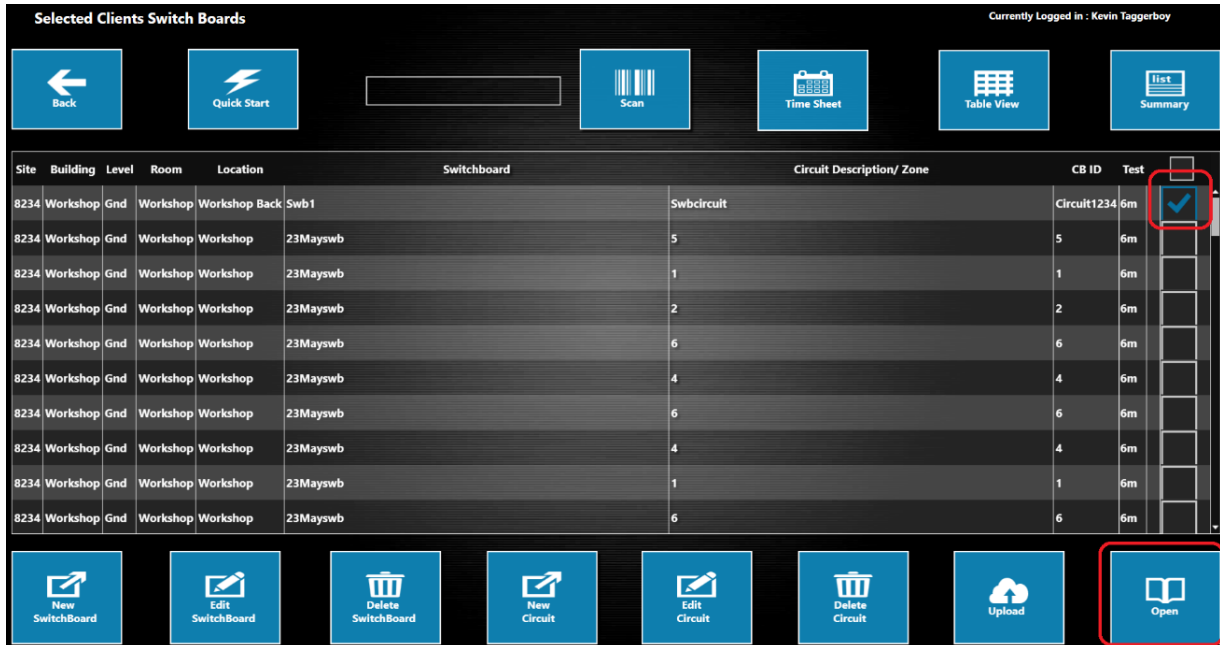
| Site | Building | Level | Room | Location | Switchboard | Circuit Description | Circuit Breaker ID | Test | Cleaning | Control |
|------|----------|-------|------|--------------|-------------|---------------------|--------------------|------|----------|------------------|
| KTB | NJL1 | 1 | 2 | Location NJL | SB 13/10 | NJL Circuit 1 | NJL Test | 6m | No | Lighting Circuit |
| KTB | NJL1 | 1 | 2 | Location NJL | SB 13/10 | NJL Circuit 2 | NJL Test 2 | 6m | No | Lighting Circuit |

5. Repeat the above steps to create all circuits for the switchboard.

Create a Circuit Plan

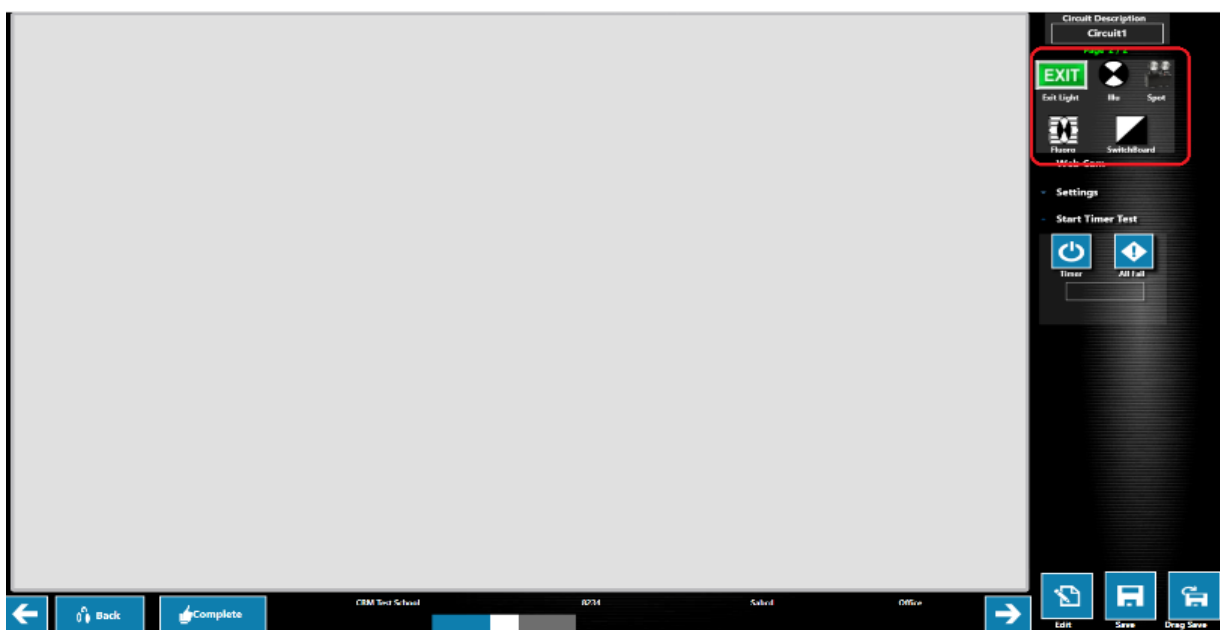
Create a Plan

1. Press in the checkbox to select a circuit on the 'Selected Clients Switchboards' screen.

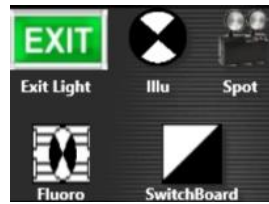


2. Press .

3. The circuit plan screen opens.




4. The asset icons are located in the top right corner of the screen.



 = Switchboard

 = Emergency exits

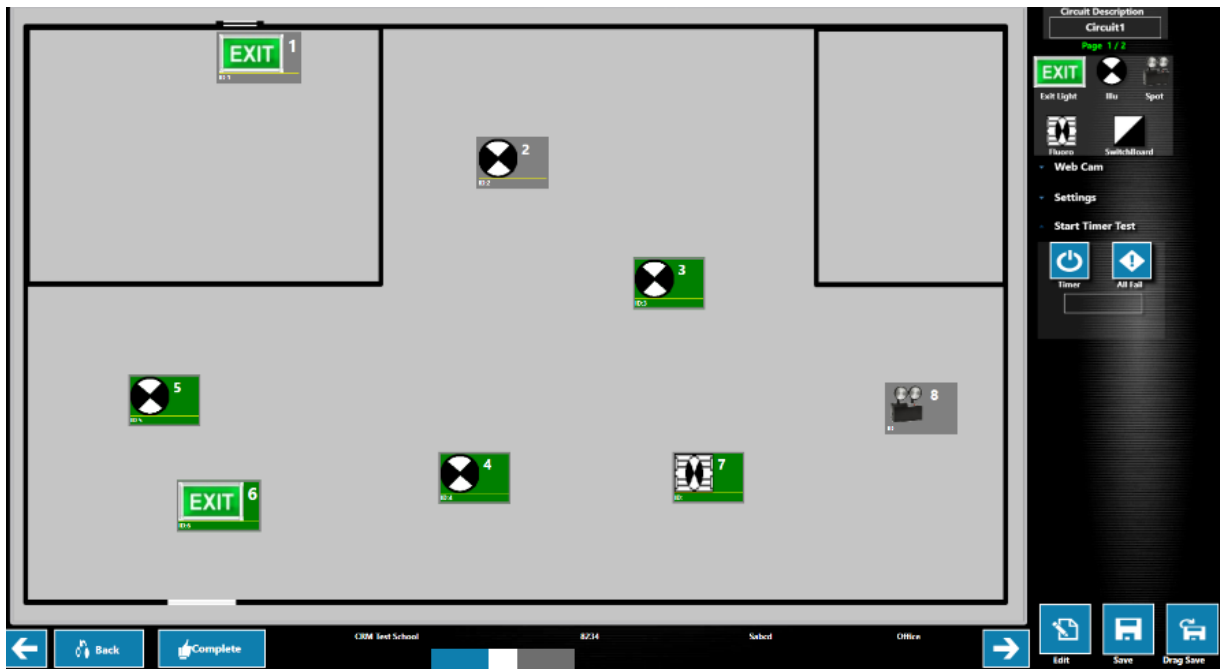
 = Emergency lighting

 = Spotlight

 = Fluoro

5. Press and hold on the required icon.


6. Drag to the required location on the plan.

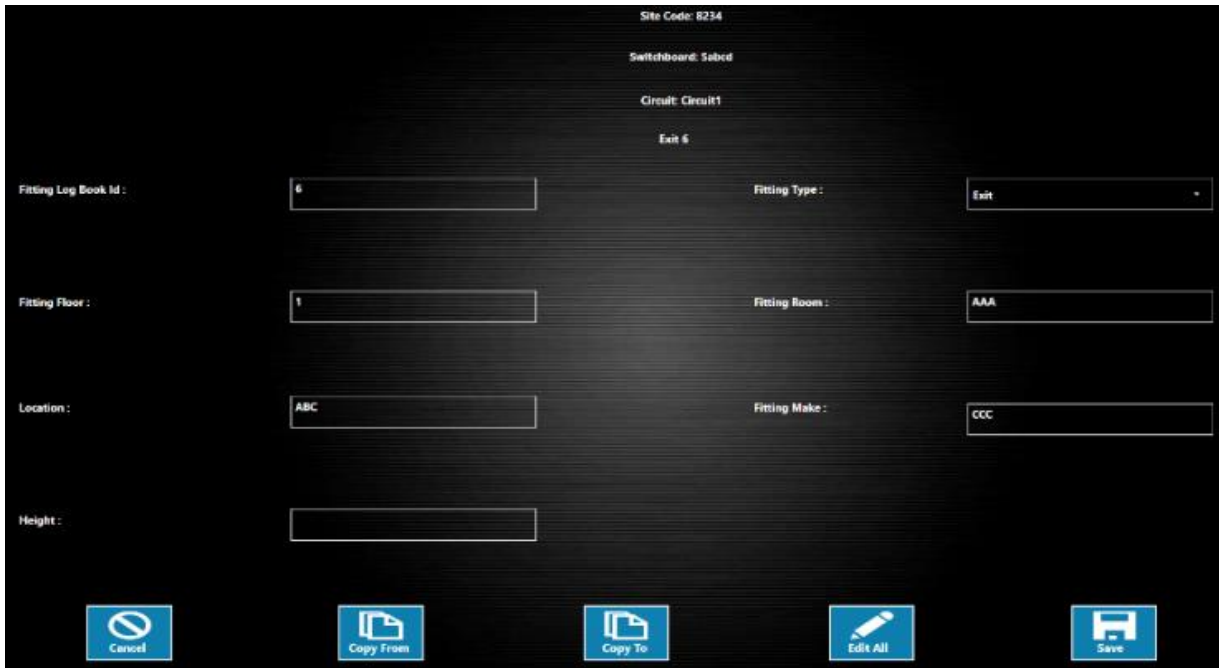


7. Repeat for all assets.

8. It is now necessary to add details for each asset on the plan.

Add Asset Details

1. Press  in the bottom right corner of the circuit plan.
2. Press and hold or double click on an asset icon.



Site Code: R234
Switchboard: Subcd
Circuit: Circuit1
Exit 6

Fitting Log Book Id : 6 Fitting Type : Exit

Fitting Floor : 1 Fitting Rooms : AAA


Location : ABC Fitting Make : CCC


Height :

Cancel Copy From Copy To Edit All Save



Notes:

- Fields on this screen differ depending on asset type.
- The field 'Fitting Log Book Id' is used for the asset ID. This is the data used when searching for an asset.


3. Enter required details.
4. Press .
5. The asset plan displays again.
6. Repeat for all assets.

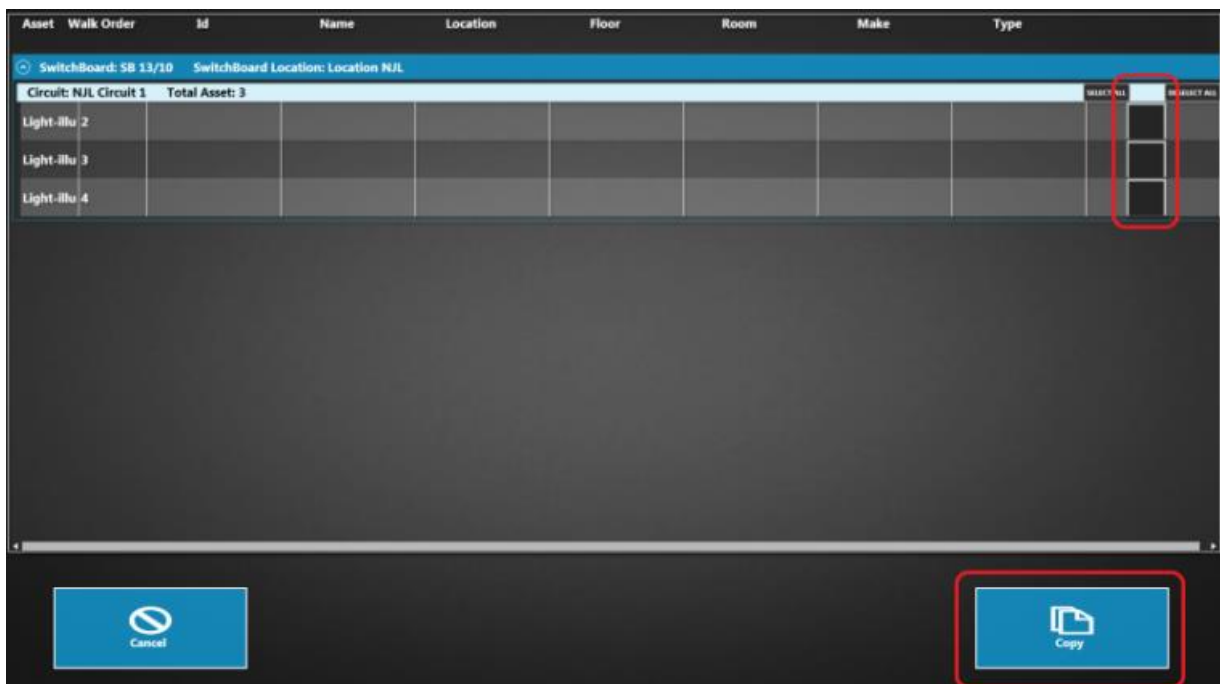
Or to create / edit multiple assets from one screen, use  on the above screen. Refer to the section [Edit All Assets](#).

Copy Asset Details

1. Press  in the bottom right corner of the circuit plan.
2. Press and hold or double click on an asset icon.
3. Press  and select one asset to copy the details from.

Or:

- Press  and select one or multiple assets to copy the details to.

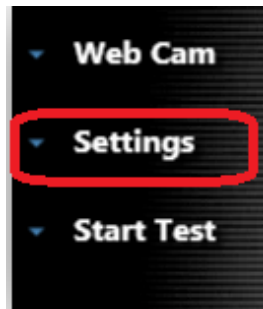


4. Press .
5. Relevant details are copied from asset to asset.

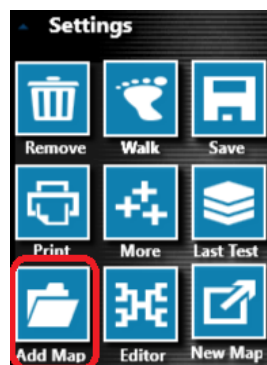
Add a Circuit Map

If a map of the building is available, it is possible to add this to the circuit plan to show the exact location of the assets.

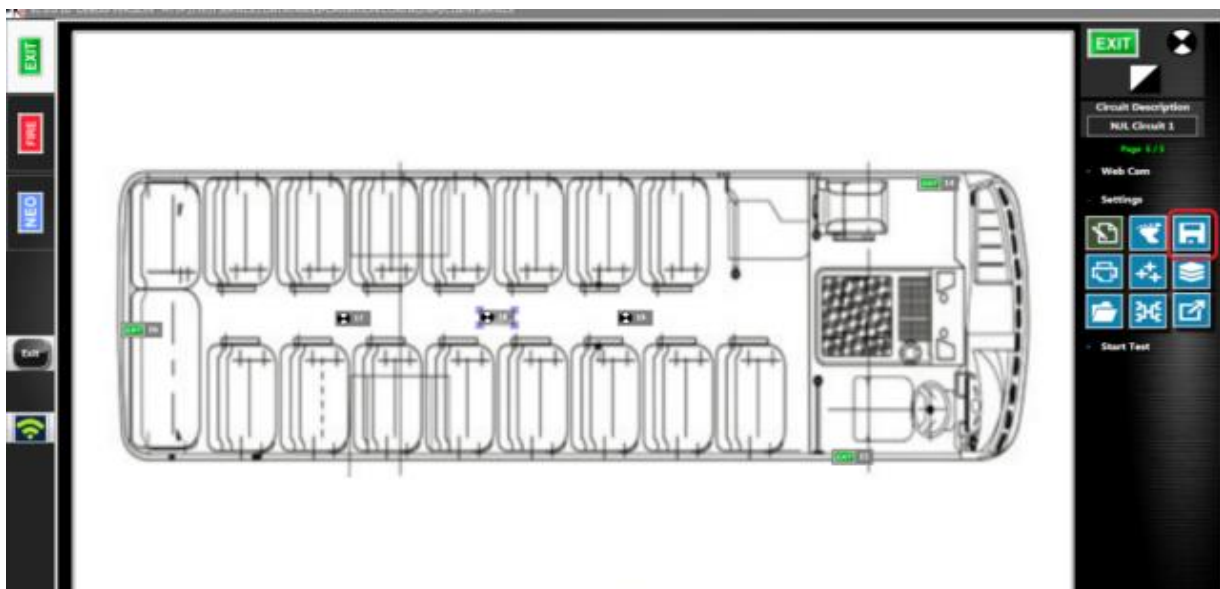
1. On the circuit plan screen, press **Settings**.



2. Press .

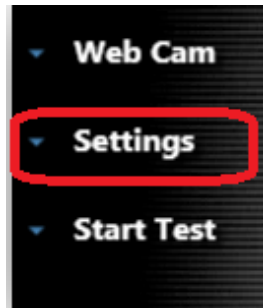


3. Locate the external file of the map.
4. Press **Open**. The map is applied to the circuit plan. Example map:

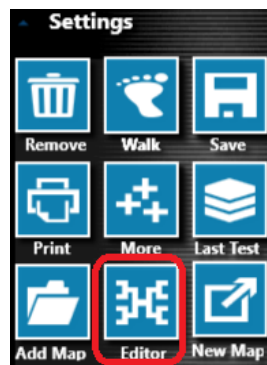


Create a Circuit Map

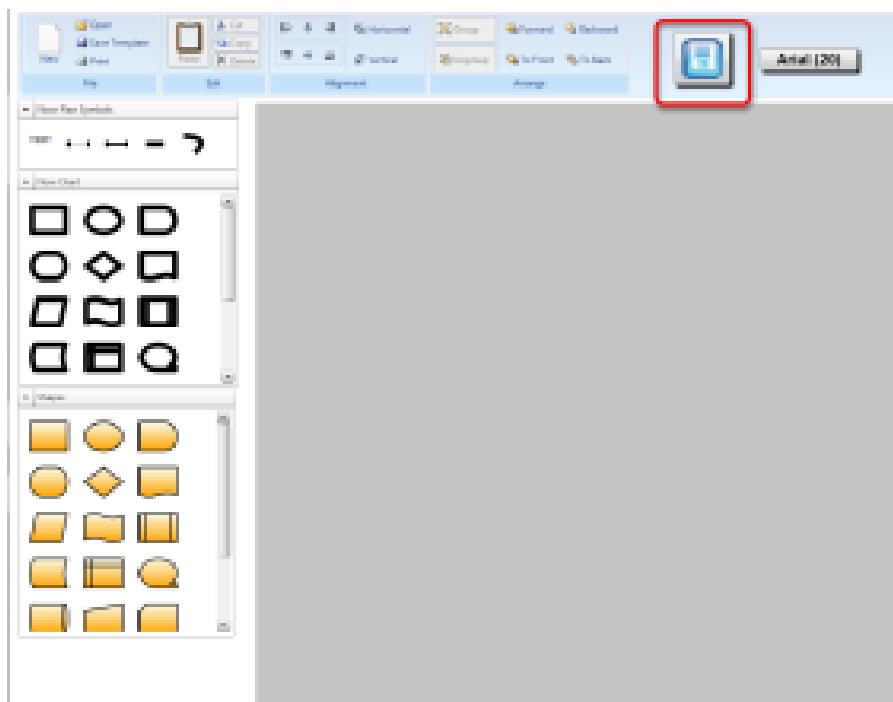
1. On the circuit plan screen, press **Settings**.




2. Press .



3. The 'Floor Plan Editor' window opens.



4. Create the floor plan as required by dragging the shapes / floor plan symbols onto the plan.
5. Press  at the top of the screen to save the floor plan.
6. Press **Yes** on the confirmation message.
7. The floor plan is automatically assigned to the circuit plan.

Add a Photo to a Circuit Map

Use the webcam to capture an image to use as a plan background. For example, take a photograph of the map of the building.

1. On the circuit plan, press **Web Cam** from the right menu to open webcam functionality.



 Press to start the webcam.

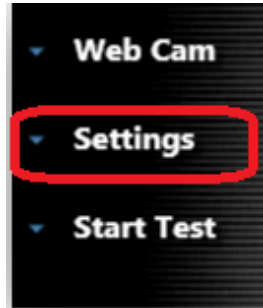
 Press to take a photograph.

 Press to stop the webcam.

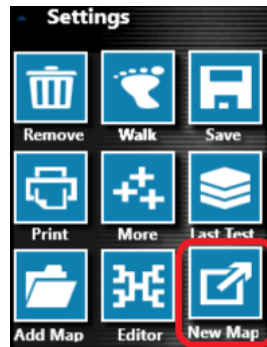
2. The photograph appears as the background on the circuit plan.

Create Multiple Plans for a Circuit

1. On the circuit plan screen, press **Settings**.



2. Press .



3. An empty plan screen opens.
4. Repeat the steps for creating a circuit plan. Refer to the section [Create a Circuit Plan](#).

Note: Each circuit can only have one switchboard. If multiple plans exist for the circuit, it is only possible to drag a switchboard icon onto one circuit plan.


5. The number of plans for the circuit is indicated on the right-hand side. For example, 'Page 3/3' means there are 3 plans for the selected circuit.



6. To scroll between the plans, use the arrows in the bottom corners of the screen.



Save the Circuit Plan

1. Press  once all circuit plans are completed to return to the 'Selected Client Switchboards' screen. The circuit plan(s) is automatically saved.
2. Assets can now be tested. Refer to the section '[Testing](#)'.

Edit Switchboard Data

Edit Switchboard Data

1. On the 'Selected Clients Switchboards' screen, press in the checkbox to select a switchboard.



2. Press .

3. Make the required changes.



4. Press .

Edit Circuit Data

1. On the 'Selected Client Switchboards' screen, press in the checkbox to select a circuit.



2. Press .

3. Make the required changes.




4. Press .

Edit Asset Details

1. Open the asset details in one of the following ways.

From the Table View Screen



Press  next to the required asset.

From the Circuit Plan



Press  in the bottom right corner.

Press and hold or double click on an asset icon.

Use the Search Box

On either the 'Selected Clients Switchboard' screen or table view, enter the asset ID (manually or scan the bar code).



2. Make the required changes.

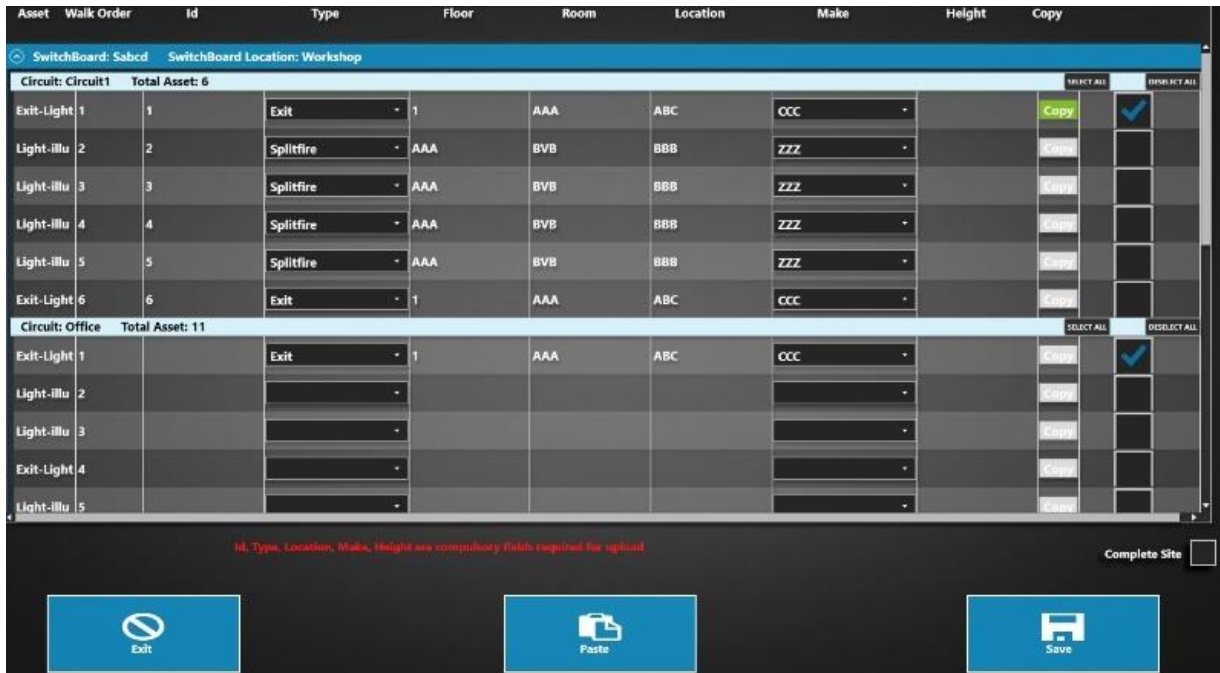


3. Press  .

Edit All Assets

Use this option to create / edit multiple assets from one screen.

1. On the asset details screen, press .



The screenshot displays a software interface for editing assets. At the top, there are tabs for 'SwitchBoard: Sabcd' and 'SwitchBoard Location: Workshop'. Below this, a table lists assets grouped into two circuits: 'Circuit: Circuit1' (Total Asset: 6) and 'Circuit: Office' (Total Asset: 11). The table columns are: Asset, Walk Order, Id, Type, Floor, Room, Location, Make, Height, Copy, and a checkbox column. The 'Copy' column contains 'Copy' buttons for each row. The checkbox column has a checked box for the first row of 'Circuit: Circuit1' and the first row of 'Circuit: Office'. At the bottom, there are three buttons: 'Exit', 'Paste', and 'Save'. A red error message at the bottom center reads: 'Id, Type, Location, Make, Height are compulsory fields required for upload'. A 'Complete Site' checkbox is located at the bottom right.

| Asset | Walk Order | Id | Type | Floor | Room | Location | Make | Height | Copy | |
|----------------------------------|------------|----|-----------|-------|------|----------|------|--------|------|-------------------------------------|
| Circuit: Circuit1 Total Asset: 6 | | | | | | | | | | |
| Exit-Light | 1 | 1 | Exit | 1 | AAA | ABC | CCC | | Copy | <input checked="" type="checkbox"/> |
| Light-illu | 2 | 2 | Splitfire | AAA | BVB | BBB | ZZZ | | Copy | <input type="checkbox"/> |
| Light-illu | 3 | 3 | Splitfire | AAA | BVB | BBB | ZZZ | | Copy | <input type="checkbox"/> |
| Light-illu | 4 | 4 | Splitfire | AAA | BVB | BBB | ZZZ | | Copy | <input type="checkbox"/> |
| Light-illu | 5 | 5 | Splitfire | AAA | BVB | BBB | ZZZ | | Copy | <input type="checkbox"/> |
| Exit-Light | 6 | 6 | Exit | 1 | AAA | ABC | CCC | | Copy | <input type="checkbox"/> |
| Circuit: Office Total Asset: 11 | | | | | | | | | | |
| Exit-Light | 1 | | Exit | 1 | AAA | ABC | CCC | | Copy | <input checked="" type="checkbox"/> |
| Light-illu | 2 | | | | | | | | Copy | <input type="checkbox"/> |
| Light-illu | 3 | | | | | | | | Copy | <input type="checkbox"/> |
| Exit-Light | 4 | | | | | | | | Copy | <input type="checkbox"/> |
| Light-illu | 5 | | | | | | | | Copy | <input type="checkbox"/> |

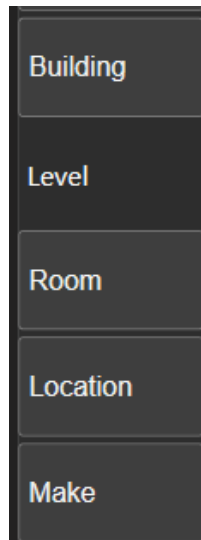
2. Make the required changes.

3. Press .

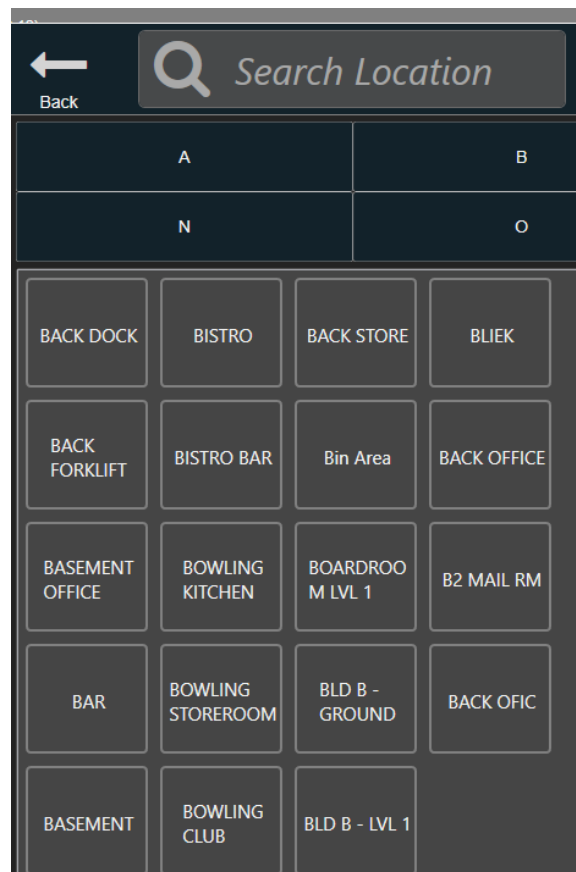
Edit Building, Room etc

Building, Room, Location and Make list entries can be removed via the Pop-up window allowing you to clean up your lists.

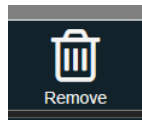
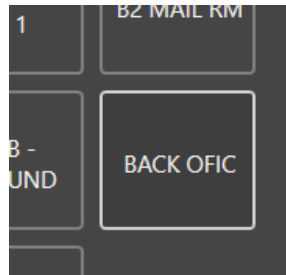
1. Select the list to edit.



2. Select the required letter to display items.

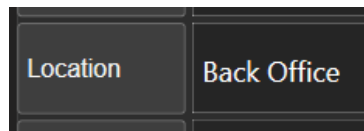


3. Select the item to remove and click the bin icon to remove it.





4. Repeat as necessary.

5. If it was removed because of a spelling mistake, it can be added back as normal from the test page.



Edit a Circuit Plan

1. Press  in the bottom right corner of the circuit plan.
2. Make changes as per sections below.
3. Press  once all changes are made to return to the 'Selected Client Switchboards' screen.

Add Assets

1. Press and hold on the required asset icon in the top right corner.
2. Drag to the required location on the plan.
3. Refer to the section '[Create a Circuit Plan](#)' for further details.

Move Assets

1. Press on an asset icon to select it.
2. The corners are highlighted in blue:



3. Drag the asset to the required location.

Re-size an Asset Icon

1. Press on an asset to select it.
2. The corners are highlighted in blue:





3. Press and drag a corner to change the size.

Circuit Plan Zoom


Use the slider in the bottom right of the circuit plan to zoom in and out of the plan.





Change the Walk Order

1. Press  in the 'Settings' menu.
2. Press the asset to be first in the walk order. The number changes to 1.
3. Continue pressing on assets in the required sequence. The number assigned to the asset changes accordingly.
4. Press  once completed.

Print the Asset Plan

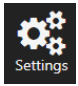
1. Press  in the 'Settings' menu.
2. Select the required printer from the pop-up window.
3. Press **Print**.

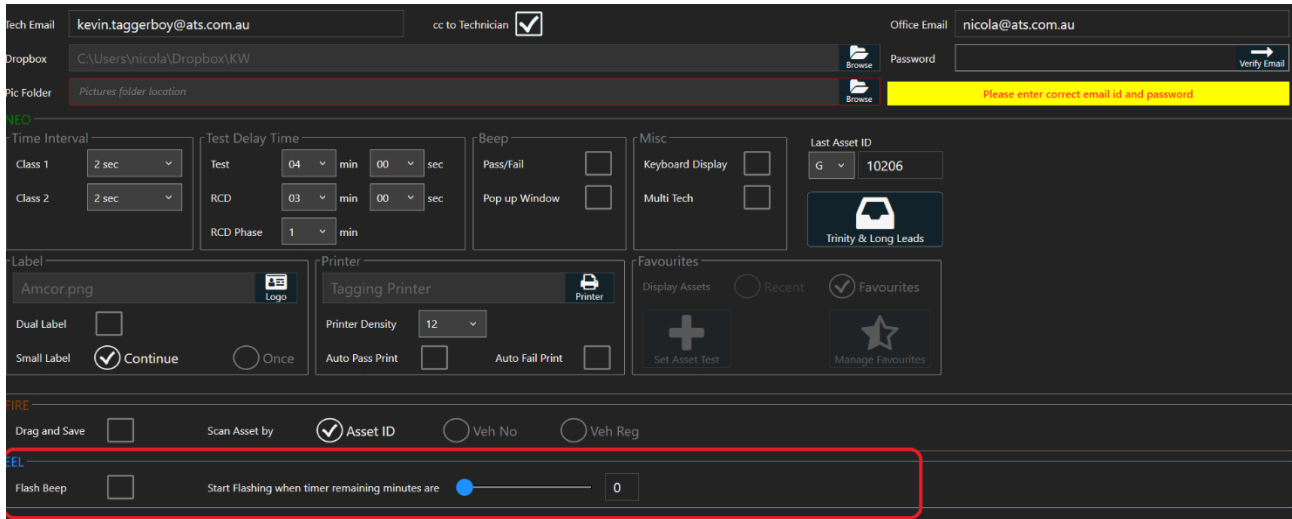
Create a PDF of the Plan

1. Press  in the 'Settings' menu.
2. Press .
3. Choose the required location to save the file.
4. Press **OK**.
5. Open the PDF document from the chosen location.

Settings



1. Press  on the left sidebar.
2. The Settings screen now combines settings for Neo, Fire and EEL.



3. The following options can be changed:

Tech Email

- This is the email address of the electrician using the app.

Dropbox

- Browse to select the default folder for dropbox. Job closure files (JCF) and job summary reports can be sent to dropbox rather than emailing.
- Refer to the 'AIRS Installation Guide' for further details.

Pic Folder


- Browse to select a default folder for storing photos.

Flash Beep

- On or Off

Flashing

- Set number of minutes to start flashing when timer is running.

4. Press  in the top right corner.

Close the App



1. Close the app by pressing  in the bottom left corner of the screen.
2. Press **Yes** on the confirmation message,

F.A.Qs

1. The lights are on the same circuit as the EEL, client won't allow me to run the testing as the site will be in darkness, what do I do?

Please assess whether the site will in full darkness or part, the client might be ok if there is enough light, but please ensure with the site that the safety protocols are in place. If the site is unable to be tested, please explain to the client that this will have to be re-scheduled before or after hours, and that the scheduling team will be in contact. You may also want to mention to the client, this moving forward is going to be a problem every 6-months, would you like our team to quote isolating the EEL with a key controller, this will avoid any issues moving forward.

2. In this case with the same circuit, who do I send tasks to?

-Send a task to scheduling asking for this to be re-scheduled before or after hours.
-Send a task to Admin asking whether we can charge an attendance fee for your time, we have been requested to provide a service, and this was not our fault that the service couldn't be provided.

3. The key switch/push button controller for the Emergency Light is not working, do I fail the test?

No, you do not fail the test, if you can still run the test controlled by the circuit breaker/RCD, then you proceed with the test. You then take clear close up pics and switchboard pics of the controller, take the brand and whatever other details possible, and email that to repairs@ats.com.au with all that information as well workorder number, site code, name, address and contact person you were dealing with. We will then quote the client to have this repaired, and if they refuse repair, we will update the notes for future workorders.

4. I do not have keys to the key controller, I cannot do the test.

Yes, you could if you control the testing by the CB/RCD, providing it doesn't affect the main lights. Take a pic of the key controller and it will be beneficial to trace down the key from the electrical wholesaler for future testing. If this isn't possible, please send a task to scheduling to update the notes that the key is missing and the tests moving forward will be via the CB/RCD number please.

5. The circuit breaker/RCD for the EEL was already off when I arrived.

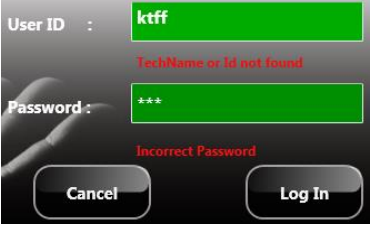
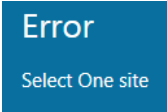
You cannot test the EEL system as the battery is now drained, take a pic of the RCD turned off and add it in the notes in the field service app. Then send a task to scheduling with the photo requesting a new booking for another day. Also ensure the RCD/CB is turned back on and wait a few minutes as it might be faulty, hence the reason why it's off.

6. I have started the test and I'm half way, I have just realised I haven't visually passed all the assets, what can I do?

You need to stop the timer, visually pass those assets and start the timer again. Please do ignore the process, otherwise you will not be paid for each asset, you have not tested the site to the standards, and you have left the site non-compliant.

**ALL PICS MUST BE TAKEN FROM YOUR MOBILE PHONE FOR
EEL AND RCD'S**

Troubleshooting

| PROBLEM | CAUSE | SOLUTION |
|--|--|--|
| <p>Error when logging on:</p>  | User ID and / or password are incorrect. | User Id = your Tech Id Password = 1234 |
| Unable to start the app. | Antivirus software is restricting access to necessary files. | Refer to the section ' Software Requirements (PC) '. |
| Data corruption. | Antivirus software is restricting access to necessary files. | Refer to the section ' Software Requirements (PC) '. |
| Unable to access printers. | Antivirus software is restricting access to necessary files. | Refer to the section ' Software Requirements (PC) '. |
| Wi-Fi icon is red. | Antivirus software is restricting access to necessary files. | Click on the Wi-Fi icon to retry the connection. |
| <p>Error when trying to open a job:</p>  | No job or multiple jobs are selected. | Ensure only one job is selected. |
| Cannot drag a switchboard icon onto a circuit plan. | A switchboard already exists for the circuit. | Scroll through the circuit plans and locate the existing switchboard icon. |
| Icons are not reacting when pressed. | Another pop-up window is open in the app. | Close any other pop-up windows in the app. |
| Unable to change the status of an asset during a timer test. | There has been no visual test for the asset. | Enter results for the visual test before doing the timer test. Refer to the section ' Visual Test ' |

| PROBLEM | CAUSE | SOLUTION |
|---|---|---|
| <p>Pressing the asset icon on the circuit plan does not change the pass / fails status. The details screen opens instead.</p> | <p>'Edit' mode is still active.</p> | <p>Press the 'Save' icon to close edit mode.</p> |
| <p>Error when opening table view:</p>  | <p>Multiple or no circuits are selected.</p> | <p>Ensure only one circuit is selected.</p> |
| <p>'Add Repair' button is greyed out on the test status window.</p> | <p>The test status is a pass. Or, the test status is a fail, but no failure details have been added.</p> |  <p>Press  to edit the test results and add the failure details.</p> <p>Refer to the section 'Failed Assets'.</p> |
| <p>Error when uploading data to the portal:</p>  | <p>Circuits have not been marked as 'complete'.</p> | <p>Complete the circuits.</p> <p>Refer to the section 'Complete a Circuit'.</p> |
| <p>Message when completing a job:</p>  | <p>Test data has not been uploaded.</p> | <p>Upload all test data before pressing 'Job complete'.</p> <p>Refer to the section 'Upload Data to the Portal'.</p> |
| <p>Error when closing the app:</p>  | <p>A timer test is still running.</p> | <p>Stop the timer using  on either the table view screen or circuit plan.</p> <p>Ensure all timers are stopped as multiple can be running at one time.</p> |
| <p>Data not uploading or downloading.</p> | <p>Date format could be incorrect on the tablet. It is likely to be set to month – day – year.</p> <p>No internet connection.</p> | <p>Ensure the date format is set to day - month-year on the tablet.</p> <p>Ensure the tablet is connected to the internet.</p> |

Any other problems call the ATS office on 1300 ATS NOW (1300 287 669). Please ensure internet access is available, as Team Viewer is usually required to assist with any issues remotely.